

PRODUCT INFORMATION PACKET



Model No: 2S002
Catalog No: 2S002
1/20 HP OEM Replacement Motor, 1075 RPM, 3 Speed, 115 Volts, 42 Frame, OAO
HVAC/R OEM Replacement Motors



Regal and Genteq are trademarks of Regal Beloit Corporation or one of its affiliated companies.
©2019 Regal Beloit Corporation, All Rights Reserved. MC017097E





Nameplate Specifications

Output HP	1/20 Hp	Frequency	60 Hz
Voltage	115 V	Current	1.25 A
Speed	1075 rpm	Service Factor	1
Phase	1	Duty	Continuous Air Over
Insulation Class	B	Frame	42
Enclosure	Open Air Over	Thermal Protection	Thermally Protected
Ambient Temperature	40 °C	UL	Recognized
CSA	Y	CE	N

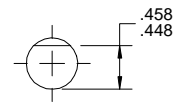
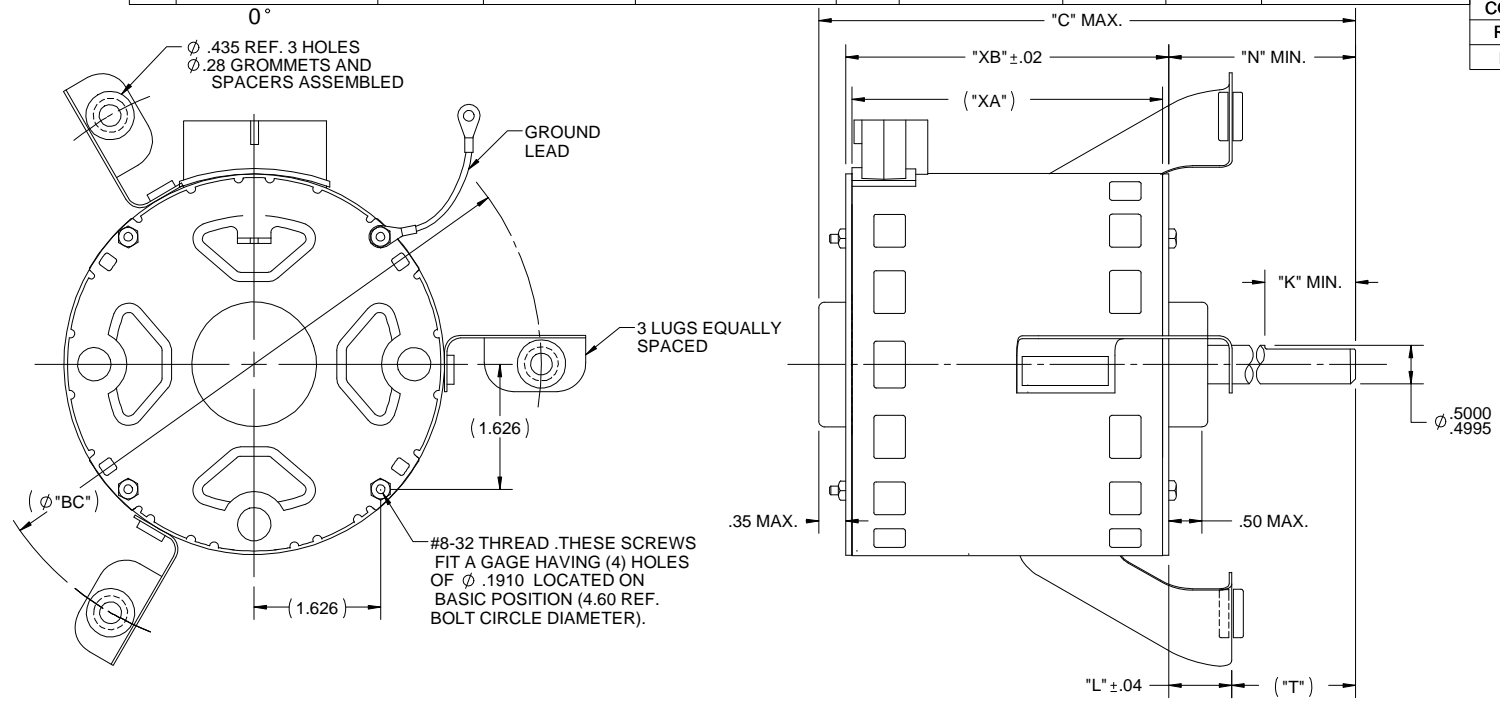
Technical Specifications

Electrical Type	Permanent Split Capacitor	Poles	6
Rotation	Counterclockwise	Mounting	Lug
Motor Orientation	Horizontal	Drive End Bearing	Sleeve
Opp Drive End Bearing	Sleeve	Frame Material	Rolled Steel
Shaft Type	Flat	Overall Length	11.06 in
Frame Length	3.41 in	Shaft Diameter	0.500 in
Shaft Extension	6.50 in		

This is an uncontrolled document once printed or downloaded and is subject to change without notice. Date Created:25/10/2019

S.NO	CONNECTION	COLOR	EXIT TYPE	EXIT LOC (VIEWING LE)	GAGE	MATERIAL	WALL THK.	LENGTH	TERMINATION
1	COMMON LEAD	YELLOW	TERM BLOCK	12:00	18	EPDM	2/64	N/R	N/R
2	CAPACITOR LEAD	BROWN	TERM BLOCK	12:00	18	EPDM	2/64	N/R	N/R
3	HIGH SPEED LEAD	BLACK	TERM BLOCK	12:00	18	EPDM	2/64	N/R	N/R
4	MED SPEED LEAD	BLUE	TERM BLOCK	12:00	18	EPDM	2/64	N/R	N/R
5	LOW SPEED LEAD	RED	TERM BLOCK	12:00	18	EPDM	2/64	N/R	N/R
6	GROUND LEAD	GRN/YEL	CLAMP SCREW	10:30 (1:30 VIEW OPE)	18	THERMOPLASTIC	2/64	6.00	#10 RING

NAMEPLATE DATA	
MODEL	5KCP29FK8997S
CUST. P/N	2S002
HP	1/20
RPM	1075
VOLTS	115
HZ	60
SPEEDS	3
AMPS	1.25
CAP. REQ'D-D1	5 µfd/370 Volts
CAP. REQ'D-D2	N/R
CONN.DRW#	NP24X327543
ROTATION	CCW (VIEWED FROM LE)
BEARING	SLEEVE



11.04	6.50	3.00	3.405	3.56	1.00	6.00	7.766
"C"	"N"	"K"	"XA"	"XB"	"L"	"T"	"BC"

NOTE:
 1) DIMENSIONS SHOWN ARE NOMINAL UNLESS OTHERWISE SPECIFIED.
 2) NAME PLATE LABEL LOCATION : 225° - CENTER - READ FROM LE.

VENTILATION SYSTEM	
SHELL VENTS	OPEN
ENDSHIELD (OPP.LEAD END)	OPEN
ENDSHIELD (LEAD END)	OPEN

DRAWING REVISION C
 ECO ECO-0150583
 REVISION BY J. RUPERT
 APPROVED BY J. RUPERT
 DATE 08-10-2018
 DATE 08-10-2018
 ECO DESCRIPTION REDRAWN IN SOLIDWORKS
 COPYRIGHT REGAL BELOIT AMERICA, INC. ALL RIGHTS RESERVED.
 PROPRIETARY AND CONFIDENTIAL INFORMATION - THIS DOCUMENT IS THE PROPERTY OF REGAL BELOIT AMERICA, INC. ("OWNER") AND CONTAINS OWNER'S PROPRIETARY INFORMATION. ANY PERSON, CORPORATION OR OTHER FIRM RECEIVING IT IS DEEMED, BY RECEIVING IT, TO AGREE THAT IT, AND/OR ANY PART OF IT, SHALL NOT BE DISCLOSED TO ANY PERSON, CORPORATION OR OTHER ENTITY, DUPLICATED, AND/OR USED, EXCEPT AS EXPRESSLY APPROVED IN WRITING IN ADVANCE BY OWNER. THIS DOCUMENT SHALL BE RETURNED TO OWNER UPON REQUEST. IT MAY BE SUBJECT TO CERTAIN RESTRICTIONS UNDER APPLICABLE EXPORT CONTROL LAWS AND REGULATIONS.

DRAWN BY G. SHONK
 DATE 08-11-2008
 APPROVED BY
 DATE
 REFERENCE
 THIRD ANGLE PROJECTION

REGAL™ Regal Beloit America, Inc.
OUTLINE
 CUSTOMER - DEF PUR

MATERIAL
 PROCESS/FINISH

SIZE B DRAWING NUMBER 5KCP29FK8997S SHEET 1 OF 1

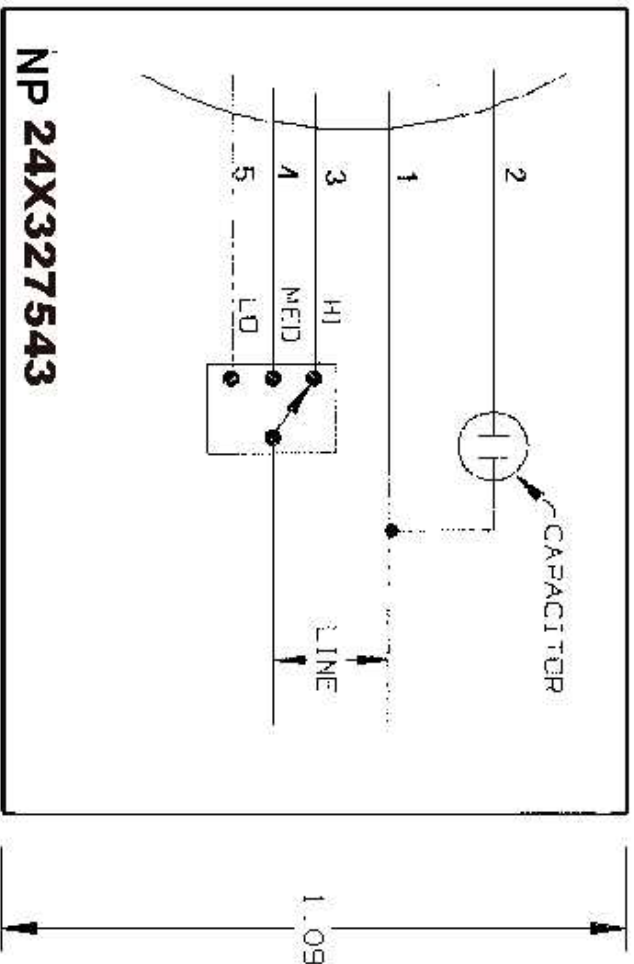
RBC PROPRIETARY STATEMENT

The document is the property of REGAL-BELOIT Corporation ("RBC") including its subsidiaries and divisions and contains proprietary information of RBC. The document is loaned on the express condition that neither it nor the information contained therein shall be disclosed to others without the express written consent of RBC and that the information shall be used by the recipient only as approved expressly by RBC. The document shall be returned to RBC upon its request. The document may be subject to certain restrictions under the U.S. export control law and regulations.

REV	DESCRIPTION
1	Convert to RBC Format JAR 10 2005

1 Convert to RBC Format JAR 10 2005

1.40
MAX



TYPE FACE: COLORS OR NUMBERS DENOTING LEAD IDENTIFICATION AND N.P. NUMBER ARE TO BE 18 POINT NEWS GOTHIC CONDENSED. OTHER INFORMATION SHOULD BE 18 POINT IF SPACE ALLOWS, OTHERWISE USE 14 POINT.

MATERIALS: 4 MIL WHITE VINYL ADHESIVE STOCK GE SPEC 450FG41-S1

BLACK INK GE SPEC A50FM448

NOTE: THE BOX LINES AND DIMENSIONS REPRESENT THE SIZE OF THE TAPE TO BE USED. DO NOT INCLUDE THESE IN STAMP FORMAT.



REGAL-BELOIT CORPORATION

CONNECTION DIAGRAM

NP 24X327543

CAS 4-87

FILE:

DPC #

1 SQUED

SCALE NO