

PRODUCT INFORMATION PACKET



Model No: 3D001
Catalog No: 3D001
1/6 HP Fan & Blower Motor, 1075 RPM, 4 Speed, 277/230 Volts, 48 Frame, OAO
Direct Drive Motors



Regal and Genteq are trademarks of Regal Beloit Corporation or one of its affiliated companies.
©2019 Regal Beloit Corporation, All Rights Reserved. MC017097E





Nameplate Specifications

Output HP	1/6 Hp	Frequency	60 Hz
Voltage	277/230 V	Current	0.78 A
Speed	1075 rpm	Service Factor	1
Phase	1	Duty	Continuous Air Over
Insulation Class	B	Frame	48
Enclosure	Open Air Over	Thermal Protection	Thermally Protected
Ambient Temperature	40 °C	UL	Recognized
CSA	Y	CE	N

Technical Specifications

Electrical Type	Permanent Split Capacitor	Poles	6
Rotation	Reversible	Mounting	Round Belly Band
Motor Orientation	Any	Drive End Bearing	Ball
Opp Drive End Bearing	Ball	Frame Material	Rolled Steel
Shaft Type	Flat	Overall Length	11.39 in
Frame Length	3.32 in	Shaft Diameter	0.500 in
Shaft Extension	6.50 in	Thru-bolts Extension	1.25 in

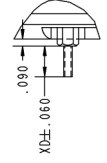
This is an uncontrolled document once printed or downloaded and is subject to change without notice. Date Created:25/10/2019

REV		SHEET	
1	1	1	1
5KCP39EGY8235			
REV. DESCRIPTION		REVISIONS	
1	CPM ADDED: REL TO PROD IS 08-1083		03/16/08

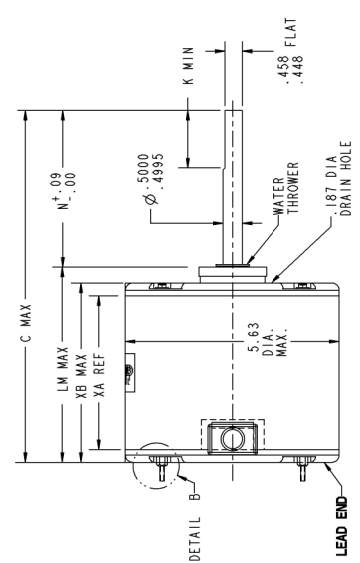
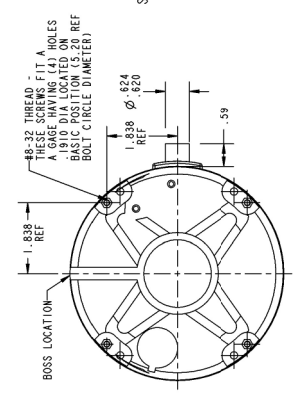
UNCONTROLLED COPY

RBC PROPRIETARY AND CONFIDENTIAL INFORMATION
 This information contains RBC's proprietary information and is intended for use only by the recipient. It is not to be distributed to other parties without the express written consent of RBC. This document shall be returned to RBC upon its receipt. This document may be subject to certain restrictions under U.S. Export Control laws and regulations.

VENTILATION SYSTEM	
SHELL VENTS	CLOSED
ENDSHIELD (OPP. LEAD END)	CLOSED
ENDSHIELD (LEAD END)	CLOSED



DETAIL B
SCALE .000



NOTE:
 1. DIMENSIONS SHOWN ARE NOMINAL UNLESS OTHERWISE SPECIFIED.

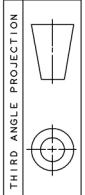
5.96	1.50	1.25	N/A	N/A	4.39
C	N	K	XN	XK	LM



TITLE
MOTOR OUTLINE
 (CUSTOMER NAME : DEF PUR)

MATERIAL DATA	
MODEL	5KCP39EGY8235
CUST P/N	1/4
IP	1100
VOLTS	208-230
PH	80
SIZE	1.40
WINDINGS	5.00/1.63/3.00/1.13
CAP. REDD-1	N/R
CAP. REDD-2	N/R
CONVL. LEV	NP2A327056
ROTATION	CCW (VIEWED FROM LE)

LEAD EXIT THRU SHELL AT 90 +/ - 3 DEG



REV	DESCRIPTION	COLOR	DRY TYPE	REV. DATE	REV. BY	REV. DATE	REV. BY	DATE	THRU	LENGTH	THROUGH
1	COMMON LEAD	YELLOW	SHELL BY/DOWN HOLE	3-00	18	THERMOPLASTIC	4/74	41.00	25	50C	
2	CAPACITOR LEAD	BROWN	SHELL BY/DOWN HOLE	3-00	18	THERMOPLASTIC	4/74	41.00	25	50C	
3	HIGH SPEED LEAD	BLACK	SHELL BY/DOWN HOLE	3-00	18	THERMOPLASTIC	4/74	41.00	25	50C	

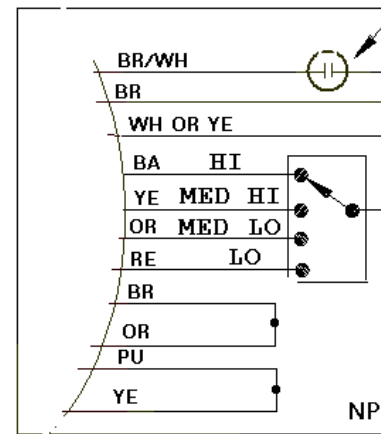
SIZE DRAWING
 B
5KCP39EGY8235

SCALE: NO
 (VIEWED FROM LE)

ISSUED: 9/20/07

SIZE A
 2/16 NO

1.40
 MAX



NOTE: THIS DRAWING WILL BE ELECTRIC MOTOR NAMEPLATE SYSTEM.

UNLESS OTHERWISE SPECIFIED	SIGNATURES	DATE
DIMENSIONS ARE IN INCHES	DRAWN	CAS 12/14/94
TOLERANCES ON:	CHECKED	
2 PL DECIMALS ±	ENG'D	
3 PL DECIMALS ±	ISSUED	
ANGLES ±		
FRACTIONS ±		
MATERIAL:	CAD NO	
APPLIED PRACTICES:		

F39: XNP8