

PRODUCT INFORMATION PACKET

Modal No: 048A17T72
Catalog No: X301
1/6,1625,TEAO,48Y,1/60/115
Direct Drive Blower and Unit Heater



Regal and Marathon are trademarks of Regal Beloit Corporation or one of its affiliated companies.
©2017 Regal Beloit Corporation, All Rights Reserved. MC017097E



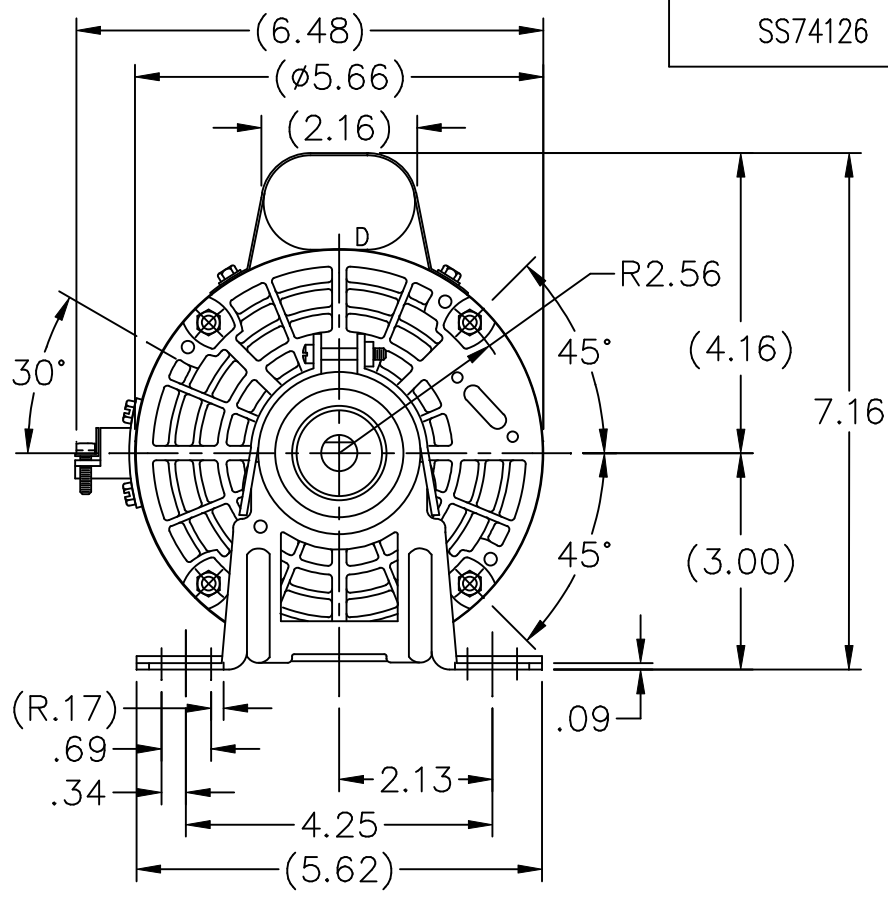
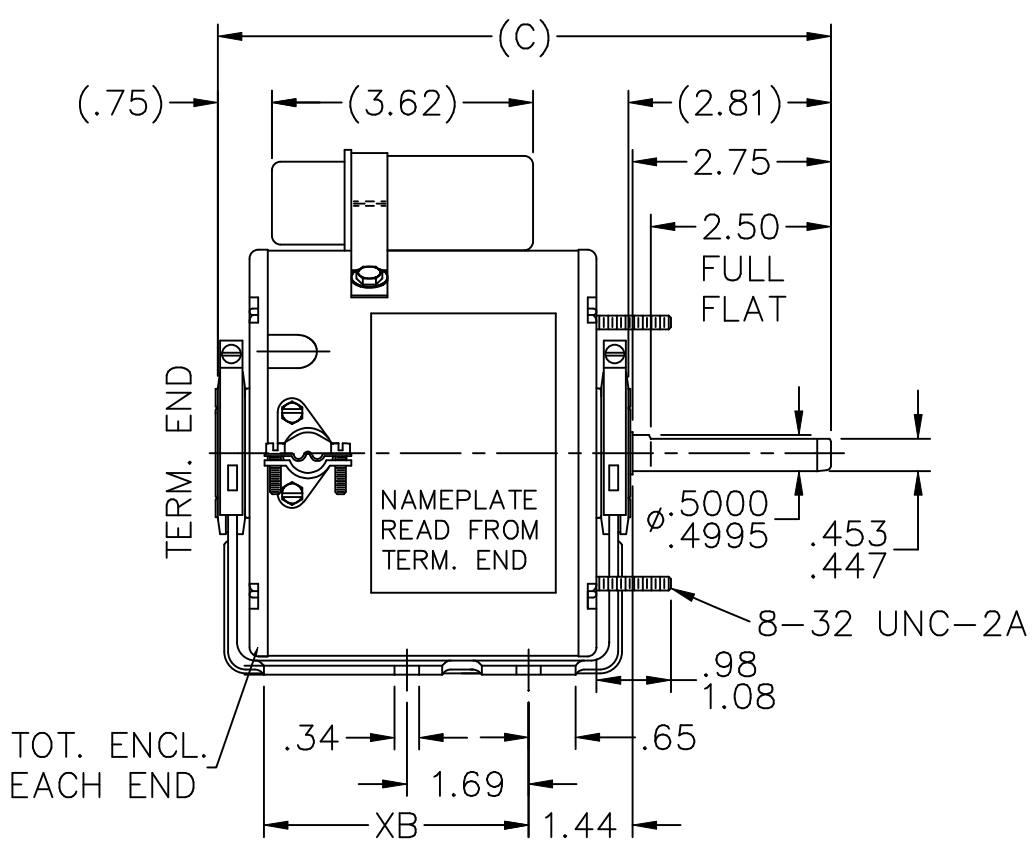
Nameplate Specifications

| | | | |
|----------------------------|----------------|------------------------|-------------------------|
| Output HP | 0.17 Hp | Output KW | 0.13 kW |
| Frequency | 60 Hz | Voltage | 115 V |
| Current | 2.15 A | Speed | 1625 rpm |
| Service Factor | 1 | Phases | 1 |
| Efficiency | 55 % | Duty | CONTINUOUS |
| Insulation Class | B | Design Code | NO DESIGN CODE |
| KVA Code | C | Frame | 48Z |
| Enclosure | TEAO | Overload Protector | AUT LCK RTR ONLY |
| Ambient Temperature | 40 °C | Drive End Bearing Size | 6203 |
| Opp Drive End Bearing Size | 6203 | UL | Recognized |
| CSA | Y | CE | N |
| IP Code | 43 | | |

Technical Specifications

| | | | |
|-----------------------|--------------------------------------|-----------------------|------------------------|
| Electrical Type | PSC 1 SPEED | Starting Method | ACROSS THE LINE |
| Poles | 4 | Rotation | SELECTIVE CCW |
| Mounting | RESILIENT BASE-EXTENDED STUDS | Motor Orientation | HORIZONTAL |
| Drive End Bearing | BALL | Opp Drive End Bearing | BALL |
| Frame Material | ROLLED STEEL | Shaft Type | SGL SPL EXT |
| Overall Length | 9 in | Frame Length | 4.75 in |
| Shaft Diameter | 0.5 in | Shaft Extension | 2.81 in |
| Assembly/Box Mounting | F1 ONLY | | |

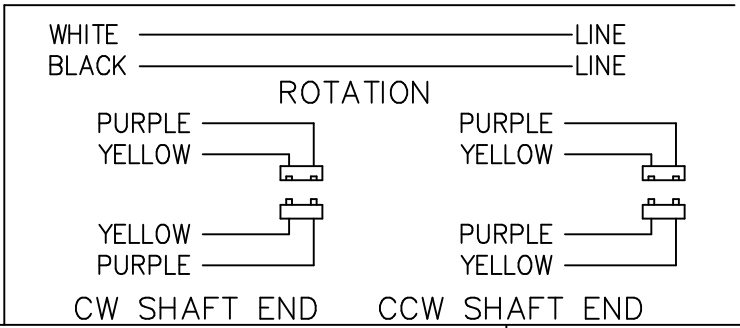
SS74126



TOT. ENCL. EACH END

LEAD DESCRIPTION:
 1 BLACK AND 1 WHITE LEAD WITH .50 BARE WIRE STRIP EXIT MOTOR THROUGH CONDUIT CONNECTOR WITH ADJUSTABLE THROAT OPENING. 35.00-37.00" LONG PURPLE AND YELLOW REVERSING LEADS MOLDED INTO MATING PULL-APART PLUGS. 4.00-6.00 LONG.

| DASH | C | XB |
|------|------|------|
| 425 | 8.50 | 3.67 |
| 475 | 9.00 | 4.17 |



| NO. | REVISION | BY & DATE | CHK | TOLERANCES UNLESS SPECIFIED | |
|-----|---------------------------------|----------------|-----|-----------------------------|--------|
| | | | | DEC. | INCHES |
| | | | | .X | ±.1 |
| 4 | REVISED MOUNTING HOLE LOCATIONS | RJW 07-12-2005 | ML | .XX | ±.03 |
| 3 | REDRAWN IN AUTOCAD | TAT 05-19-2005 | ML | .XXX | ±.005 |
| 2 | REDRAWN ON CADD - NO CHANGE | MRB 04-01-1998 | | .XXXX | ±.0005 |
| | | | | ANG | ±7'30" |



| |
|----------------------|
| DRAWN MRB 03-10-1998 |
| CHK ML 04-01-1998 |
| APPD GK 04-01-1998 |
| SCALE 3=8 |
| REF |
| FMF |
| PREV |

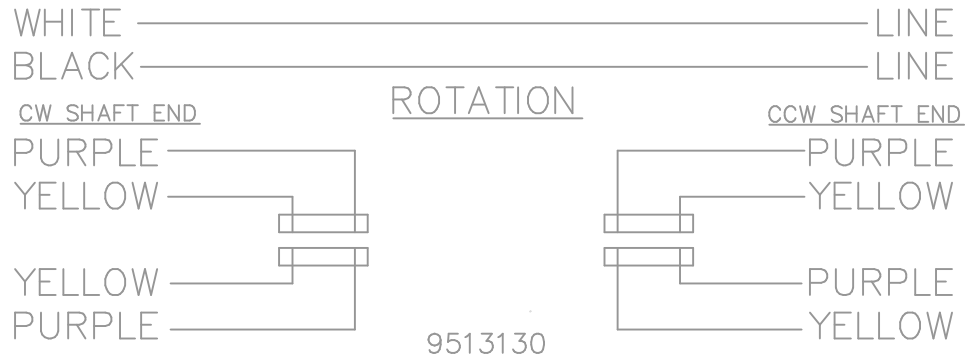
THIS DRAWING IN DESIGN AND DETAIL IS OUR PROPERTY AND MUST NOT BE USED EXCEPT IN CONNECTION WITH OUR WORK ALL RIGHTS OF DESIGN AND INVENTION ARE RESERVED THIS IS AN ELECTRONICALLY GENERATED DOCUMENT - DO NOT SCALE THIS PRINT

| | | | | | |
|---------|------------------|--------|---------------------|---------|--------|
| RFP | CAD FILE ss74126 | SIZE A | DRAWING NO. SS74126 | PAGE OF | REV. 4 |
| DIST WP | | | | | |

```
ERROR: syntaxerror  
OFFENDING COMMAND: --nostringval--
```

```
STACK:
```

```
/initialize  
-dictionary-  
/Pscript_WinNT_Compact  
-dictionary-
```



| | | | | | | | | | |
|--|--------------------|----------------|-----|--------------------------------|------------------|-------------------------|----------------------|---------------------|------|
| | | | | TOLERANCES UNLESS SPECIFIED | | | DRAWN TOM 09/19/1988 | | |
| | | | | DEC. | INCHES | | CHK | | |
| | | | | .X | ±.1 | | APPD MS 09/20/1988 | | |
| | | | | .XX | ±.02 | | SCALE 1=1 | | |
| | | | | .XXX | ±.005 | | REF | | |
| 3 | REDRAWN IN AUTOCAD | JMS 03/11/2005 | | .XXX | ±.005 | TITLE CONNETION DIAGRAM | | FMF | |
| 2 | NEW DRAWING | TOM 09/19/1988 | | .XXXX | ±.0005 | MAT'L. | | PREV | |
| NO. | REVISION | BY & DATE | CHK | ANG | ±7'30" | FINISH | | | |
| THIS DRAWING IN DESIGN AND DETAIL IS OUR PROPERTY AND MUST NOT BE USED EXCEPT IN CONNECTION WITH OUR WORK ALL RIGHTS OF DESIGN AND INVENTION ARE RESERVED THIS IS AN ELECTRONICALLY GENERATED DOCUMENT - DO NOT SCALE THIS PRINT | | | | RFP | CAD FILE 9513130 | | SIZE | DRAWING NO. PAGE OF | REV. |
| | | | | DIST | WP | A | | 9513130 | 3 |

CERTIFICATION DATA SHEET

Model#: 48A17T72 J WINDING#: PE484158 NONE 1
 CONN. DIAGRAM: 9513130 ASSEMBLY: F1 ONLY
 OUTLINE: A-SS74126-475

TYPICAL MOTOR PERFORMANCE DATA

| HP | KW | SYNC. RPM | F.L. RPM | FRAME | ENCLOSURE | KVA CODE | DESIGN |
|-----|------|-----------|----------|-------|-----------|----------|----------------|
| 1/6 | 0.13 | 1800 | 1625 | 48Z | TEAO | C | NO DESIGN CODE |

| PH | Hz | VOLTS | FL AMPS | START TYPE | DUTY | INSL | S.F | AMB°C | ELEVATION |
|----|----|-------|---------|-----------------|------------|------|-----|-------|-----------|
| 1 | 60 | 115 | 2.15 | ACROSS THE LINE | CONTINUOUS | B3 | 1.0 | 40 | 3300 |

| FULL LOAD EFF: 55.0 | 3/4 LOAD EFF: - | 1/2 LOAD EFF: - | GTD. EFF | ELEC. TYPE | NO LOAD AMPS |
|---------------------|-----------------|-----------------|----------|-------------|--------------|
| FULL LOAD PF: - | 3/4 LOAD PF: - | 1/2 LOAD PF: - | - | PSC 1 SPEED | 1 |

| F.L. TORQUE | LOCKED ROTOR AMPS | L.R. TORQUE | B.D. TORQUE | F.L. RISE°C |
|-------------|-------------------|-------------|--------------|-------------|
| 8.7 LB-FT | 5.5 | 4.1 LB-FT - | 12.5 LB-FT - | - |

| SOUND PRESSURE @ 3 FT. | SOUND POWER | ROTOR WK^2 | MAX. WK^2 | SAFE STALL TIME | STARTS /HOUR | APPROX. MOTOR WGT |
|------------------------|-------------|------------|-----------|-----------------|--------------|-------------------|
| - dBA | - dBA | - LB-FT^2 | - LB-FT^2 | - SEC. | - | - LBS. |

*** SUPPLEMENTAL INFORMATION ***

| DE BRACKET TYPE | ODE BRACKET TYPE | MOUNT TYPE | ORIENTATION | SEVERE DUTY | HAZARDOUS LOCATION | DRIP COVER | SCREENS | PAINT |
|-----------------|------------------|-------------------------------|-------------|-------------|--------------------|------------|---------|---------------|
| STANDARD | STANDARD | RESILIENT BASE-EXTENDED STUDS | HORIZONTAL | FALSE | NONE | FALSE | NONE | GRAY (POWDER) |

| BEARINGS | | GREASE | SHAFT TYPE | SPECIAL DE | SPECIAL ODE | SHAFT MATERIAL | FRAME MATERIAL |
|----------|------|------------|-------------|--|-------------|--------------------------|----------------|
| DE | OPE | | | | | | |
| BALL | BALL | BEACON 325 | SGL SPL EXT | 0.500 x 2.75 IN SEF WITH 2.50 IN FULL FLAT | NONE | 1144 STRESSPROOF (C-223) | ROLLED STEEL |
| 6203 | 6203 | | | | | | |

| THERMO-PROTECTORS | | | | THERMISTORS | CONTROL | SPACE /n HEATERS |
|-------------------|------------------|----------|----------|-------------|---------|------------------|
| THERMOSTATS | PROTECTORS | WDG RTDs | BRG RTDs | | | |
| NONE | AUT LCK RTR ONLY | NONE | NONE | NONE | FALSE | NONE VOLTS |

If Inverter equals NONE, contact factory for further information

*
N
O
T
E
S
*

| |
|---------------------------|
| INVERTER TORQUE: NONE |
| INV. HP SPEED RANGE: NONE |
| ENCODER: NONE |
| NONE NONE |
| NONE NONE PPR |
| BRAKE: NONE NONE |
| NONE P/N NONE |
| NONE NONE |
| NONE FT-LB NONE V NONE Hz |

Uncontrolled Copy

** Subject to change without notice.