

# PRODUCT INFORMATION PACKET

Modal No: 048S17D2017  
Catalog No: D107  
1/6,1725,DP,48Y,1/60/115  
Fan and Blower



Regal and Marathon are trademarks of Regal Beloit Corporation or one of its affiliated companies.  
©2017 Regal Beloit Corporation, All Rights Reserved. MC017097E



## Nameplate Specifications

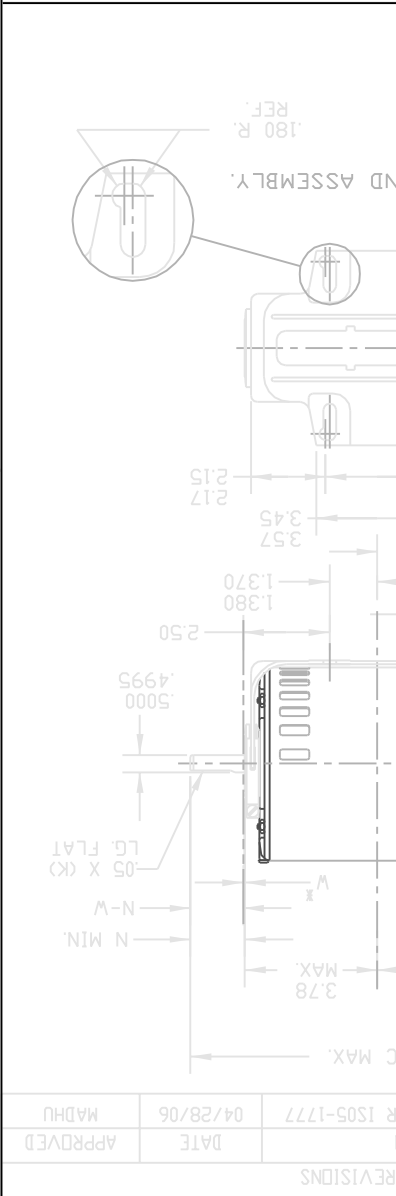
Output HP	<b>0.17 Hp</b>	Output KW	<b>0.13 kW</b>
Frequency	<b>60 Hz</b>	Voltage	<b>115 V</b>
Current	<b>3.6 A</b>	Speed	<b>1725 rpm</b>
Service Factor	<b>1.35</b>	Phases	<b>1</b>
Efficiency	<b>55 %</b>	Duty	<b>CONTINUOUS</b>
Insulation Class	<b>B</b>	Design Code	<b>NO DESIGN CODE</b>
KVA Code	<b>S</b>	Frame	<b>48</b>
Enclosure	<b>DP</b>	Overload Protector	<b>AUTOMATIC</b>
Ambient Temperature	<b>40 °C</b>	Drive End Bearing Size	<b>6203</b>
Opp Drive End Bearing Size	<b>6203</b>	UL	<b>Recognized</b>
CSA	<b>Y</b>	CE	<b>N</b>
IP Code	<b>22</b>		

## Technical Specifications

Electrical Type	<b>SPLIT PHASE</b>	Starting Method	<b>ACROSS THE LINE</b>
Poles	<b>4</b>	Rotation	<b>SELECTIVE CCW</b>
Mounting	<b>RESILIENT BASE</b>	Motor Orientation	<b>HORIZONTAL</b>
Drive End Bearing	<b>SLEEVE</b>	Opp Drive End Bearing	<b>SLEEVE</b>
Frame Material	<b>ROLLED STEEL</b>	Shaft Type	<b>T</b>
Overall Length	<b>8.99 in</b>	Shaft Diameter	<b>0.5 in</b>
Shaft Extension	<b>1.5 in</b>	Assembly/Box Mounting	<b>F1 ONLY</b>

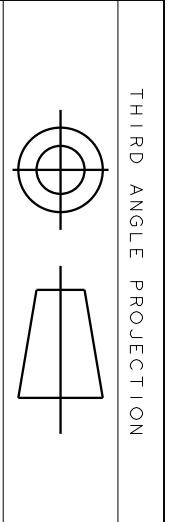
MATERIAL		SOLID MODEL: 52A11285	
DIMENSIONS ARE IN INCHES		SCALE: 0.250	
PRACTICES		REF. No.	
FOR ADDITIONAL INFO REFER TO:		SHEET 1 # 1	
ISSUED	DURGA 03/21/05	SIZE	A
QUALITY		REV	1
WFG		52A11285	
CHKG		REGAL-BELOIT CORPORATION	
CHECKED		OUTLINE	
DETAIL		FORM-N-GENERAL PURPOSE MOTOR-DRIP PROOF-SOLID DR RESIL	
MODEL	DURGA 03/21/05	BASE-BALL DR SLEEVE BEARING-SPECIAL MOUNTING HOLES IN BASE	
SIGNATURES	DATE	TITLE	

P	K	TYPE	GE	NEMA	C	K	L	N	N-W
1	K	KH	32	48	8.99	125	3.71	1.50	1.63/1.41



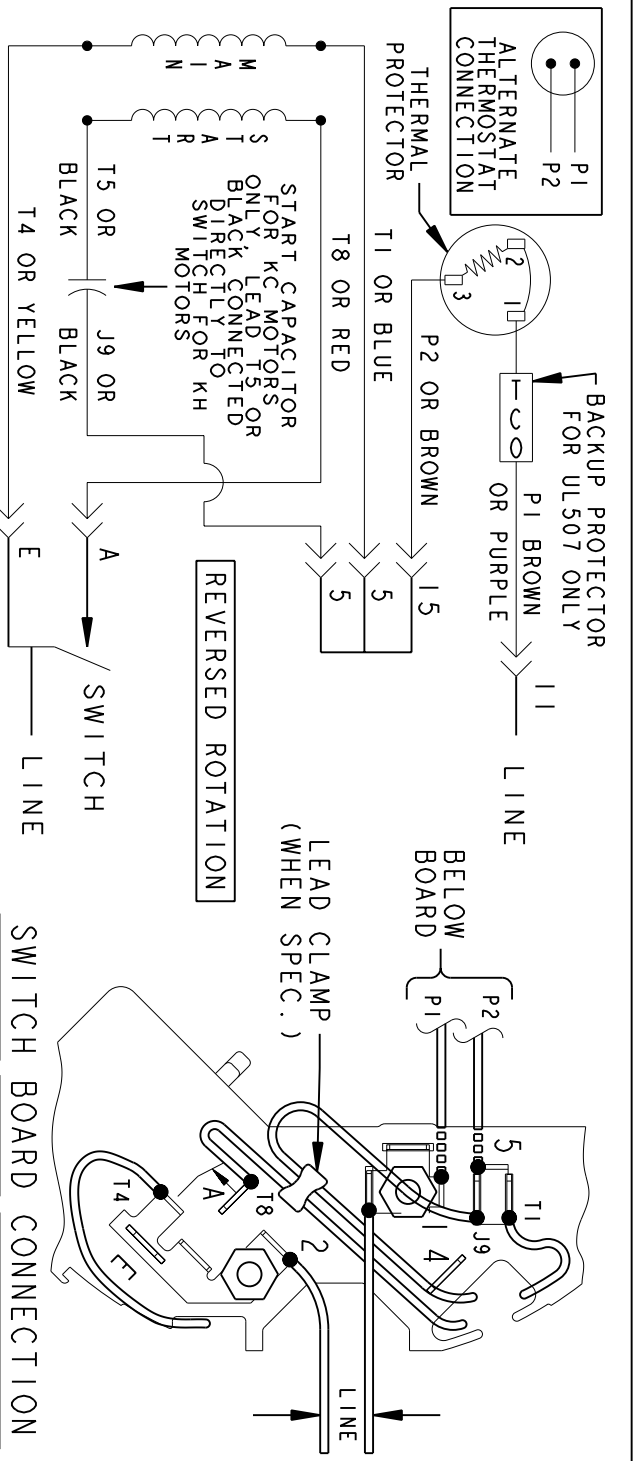
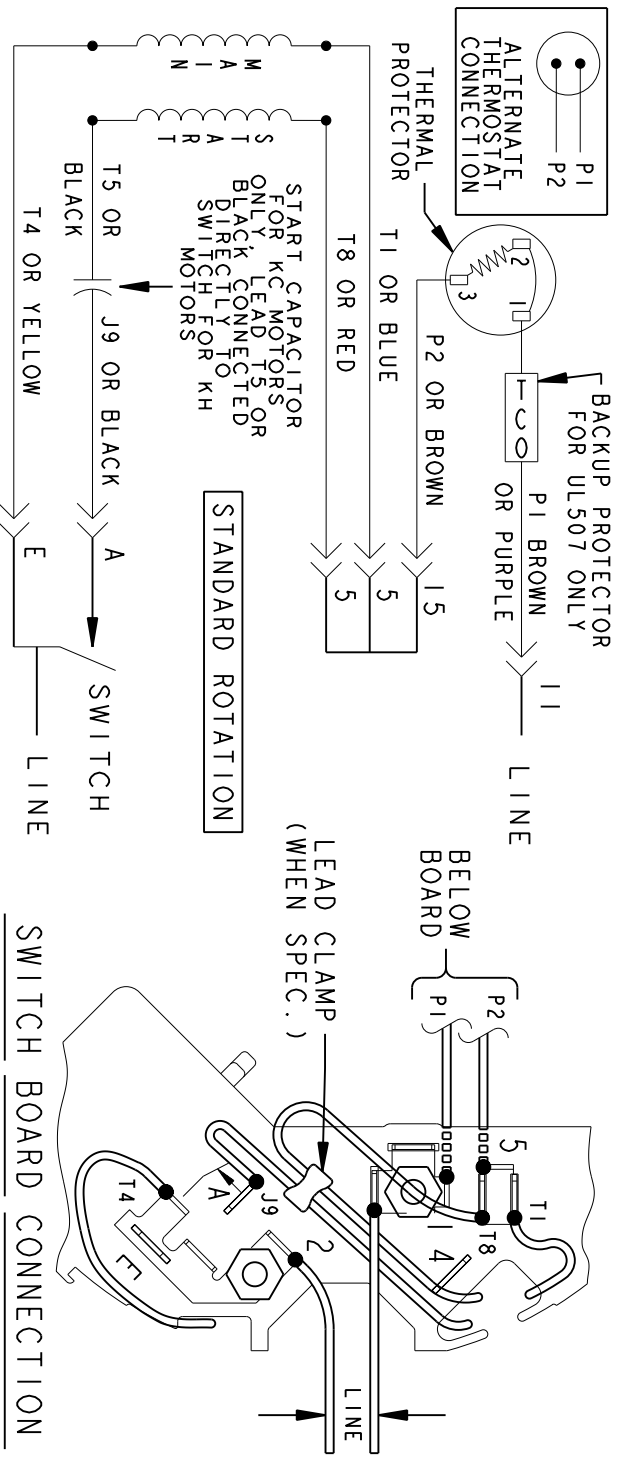
THIRD ANGLE PROJECTION	
REV.	1
DESCRIPTION	CHG TO RBC FORMAT PER ISO5-1777
DATE	04/28/06
APPROVED	MADHU

52A11285 | SHEET 1 | DRAWING NO. A | REGAL-BELOIT CORPORATION



REV.	DESCRIPTION	DATE	APPROVED
6	UPDATED FORMAT	12/01/05	MAM

EITHER ROTATION-SINGLE VOLTAGE-TYPE KC OR KH-WITH THERMAL PROTECTOR



NOTE #1 - TO REVERSE ROTATION INTERCHANGE RED (T8) AND BLACK (J9-KC OR T5-KH) LEADS.  
 NOTE #2 - WHEN MORE THAN ONE CAPACITOR IS USED CONNECT IN PARALLEL.

SWITCH (C) - 115D958AB REF. DIAG. - 121A851 CONN. LABEL - 52X332048

SIGNATURES	DATE
MODEL M.D.PAPE	06/29/87
DETAIL	
CHECKED	
ENGRG	
MFG	
QUALITY	
ISSUED	M.D.P. 03/08/00
SOLID MODEL: 52A105379AA	

**REGAL-BELOIT CORPORATION**

**REGAL-BELOIT**

**CONNECTION DIAGRAM**

**FMF - 30 FR SWITCH REDESIGN**

SCALE: 1.000 REF. No.:

52A105379AA

REV 6

CERTIFICATION DATA SHEET

Model#: 48S17D2017 P WINDING#: 52X331756P1 NONE 0  
 CONN. DIAGRAM: 52A105379AA ASSEMBLY: F1 ONLY  
 OUTLINE: 52A111285P1

TYPICAL MOTOR PERFORMANCE DATA

HP	KW	SYNC. RPM	F.L. RPM	FRAME	ENCLOSURE	KVA CODE	DESIGN
1/6	0.13	1800	1725	48	DP	S	NO DESIGN CODE

PH	Hz	VOLTS	FL AMPS	START TYPE	DUTY	INSL	S.F	AMB°C	ELEVATION
1	60	115	3.6	ACROSS THE LINE	CONTINUOUS	B3	1.35	40	3300

FULL LOAD EFF: 55	3/4 LOAD EFF: 50.2	1/2 LOAD EFF: 41.7	GTD. EFF	ELEC. TYPE	NO LOAD AMPS
FULL LOAD PF: 32.1	3/4 LOAD PF: 27.9	1/2 LOAD PF: 23.4	74	SPLIT PHASE	-

F.L. TORQUE	LOCKED ROTOR AMPS	L.R. TORQUE	B.D. TORQUE	F.L. RISE°C
8.19 LB-FT	23.3	17.72 LB-FT 217	22.65 LB-FT 277	0

SOUND PRESSURE @ 3 FT.	SOUND POWER	ROTOR WK^2	MAX. WK^2	SAFE STALL TIME	STARTS /HOUR	APPROX. MOTOR WGT
0 dBA	10 dBA	0 LB-FT^2	0 LB-FT^2	10 SEC.	2	0 LBS.

\*\*\* SUPPLEMENTAL INFORMATION \*\*\*

DE BRACKET TYPE	ODE BRACKET TYPE	MOUNT TYPE	ORIENTATION	SEVERE DUTY	HAZARDOUS LOCATION	DRIP COVER	SCREENS	PAINT
STANDARD	STANDARD	RESILIENT BASE	HORIZONTAL	FALSE	NONE	FALSE	NONE	GRAY (POWDER)

BEARINGS		GREASE	SHAFT TYPE	SPECIAL DE	SPECIAL ODE	SHAFT MATERIAL	FRAME MATERIAL
DE	OPE	BEACON 325	T	NONE	NONE	1144 STRESSPROOF (C-223)	ROLLED STEEL
SLEEVE	SLEEVE						
6203	6203						

THERMO-PROTECTORS				THERMISTORS	CONTROL	SPACE /n HEATERS
THERMOSTATS	PROTECTORS	WDG RTDs	BRG RTDs	NONE	FALSE	NONE VOLTS
NONE	AUTOMATIC	NONE	NONE			

If Inverter equals NONE, contact factory for further information

INVERTER TORQUE: NONE
INV. HP SPEED RANGE: NONE
ENCODER: NONE
NONE NONE
NONE NONE PPR
BRAKE: NONE NONE
NONE P/N NONE
NONE NONE
NONE FT-LB NONE V NONE Hz

\*  
N  
O  
T  
E  
S  
\*

DATE: 06/28/2017 06:40:10 AM

FORM 3531 REV.3 02/07/99

\*\* Subject to change without notice.