

PRODUCT INFORMATION PACKET

Modal No: 048S17D997
Catalog No: B400
1/3,1800,DP,48,1/60/115
Single Phase



Regal and Marathon are trademarks of Regal Beloit Corporation or one of its affiliated companies.
©2017 Regal Beloit Corporation, All Rights Reserved. MC017097E



Nameplate Specifications

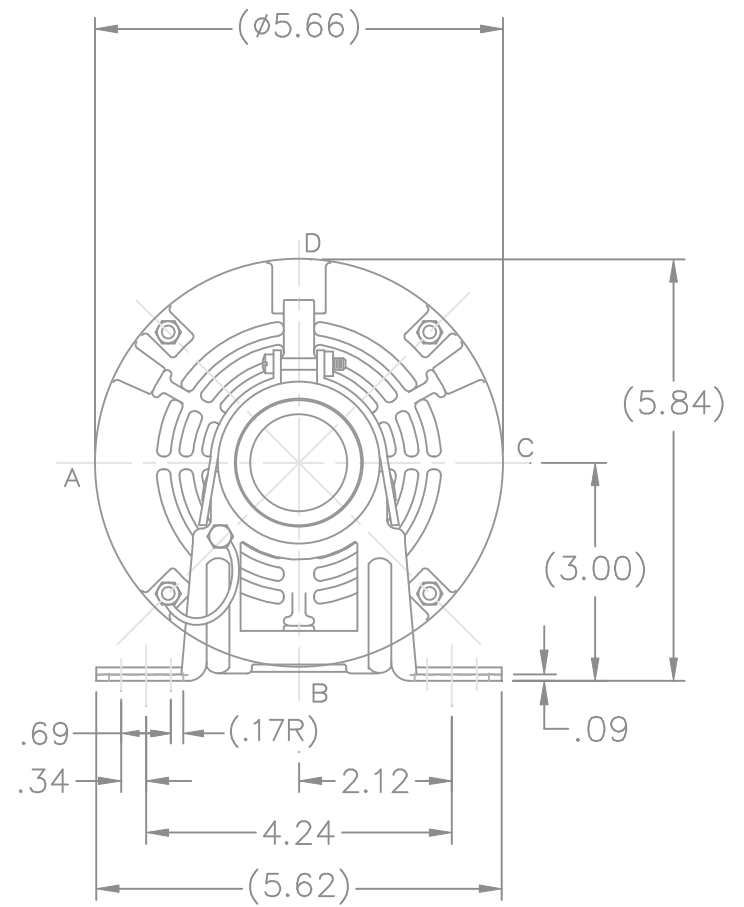
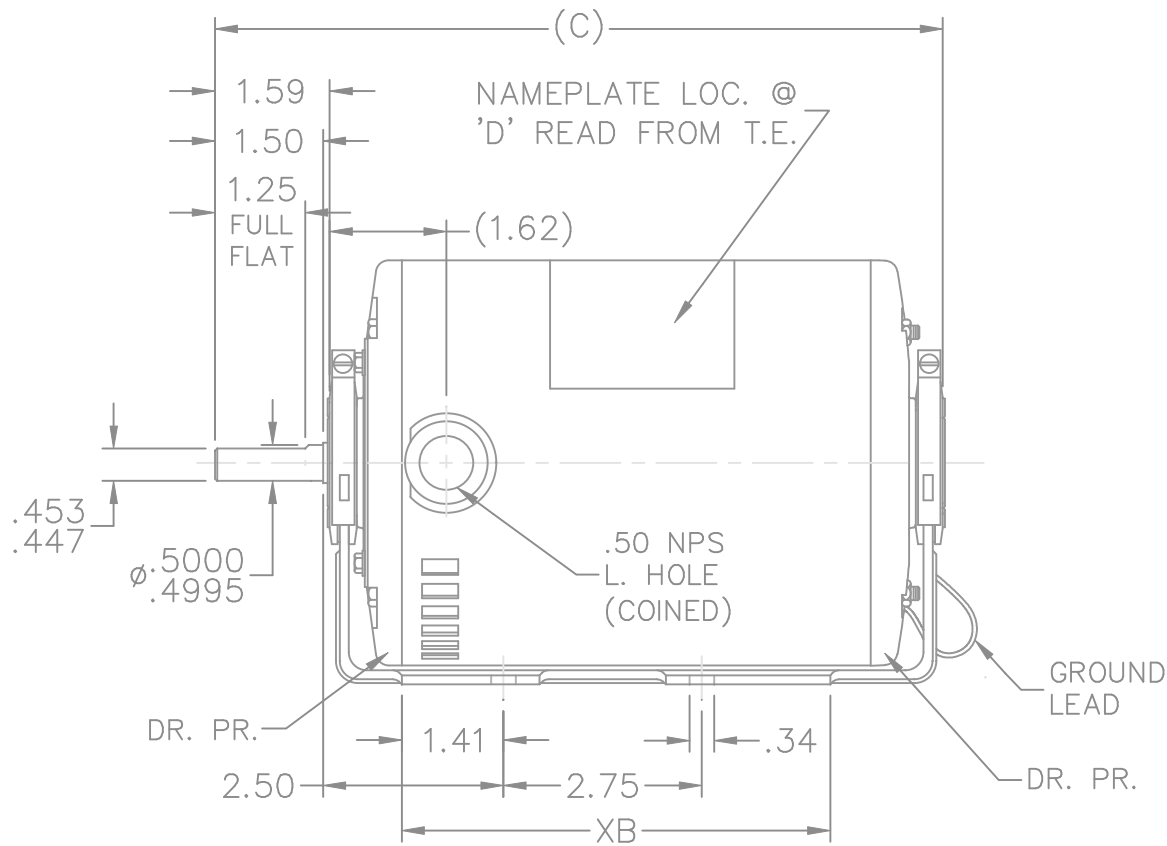
| | | | |
|----------------------------|----------------|------------------------|-----------------------|
| Output HP | 0.33 Hp | Output KW | 0.25 kW |
| Frequency | 60 Hz | Voltage | 115 V |
| Current | 6.6 A | Speed | 1725 rpm |
| Service Factor | 1 | Phases | 1 |
| Efficiency | 61.5 % | Duty | CONTINUOUS |
| Insulation Class | B | Design Code | NO DESIGN CODE |
| KVA Code | R | Frame | 48 |
| Enclosure | DPAO | Overload Protector | AUTOMATIC |
| Ambient Temperature | 40 °C | Drive End Bearing Size | 6203 |
| Opp Drive End Bearing Size | 6203 | UL | Recognized |
| CSA | Y | CE | N |
| IP Code | 22 | | |

Technical Specifications


| | | | |
|-----------------------|-----------------------|-----------------------|------------------------|
| Electrical Type | SPLIT PHASE | Starting Method | ACROSS THE LINE |
| Poles | 4 | Rotation | SELECTIVE CCW |
| Mounting | RESILIENT BASE | Motor Orientation | HORIZONTAL |
| Drive End Bearing | BALL | Opp Drive End Bearing | BALL |
| Frame Material | ROLLED STEEL | Shaft Type | STANDARD 48 |
| Overall Length | 9.34 in | Frame Length | 5.75 in |
| Shaft Diameter | 0.5 in | Shaft Extension | 1.59 in |
| Assembly/Box Mounting | F1 ONLY | | |

TERM END

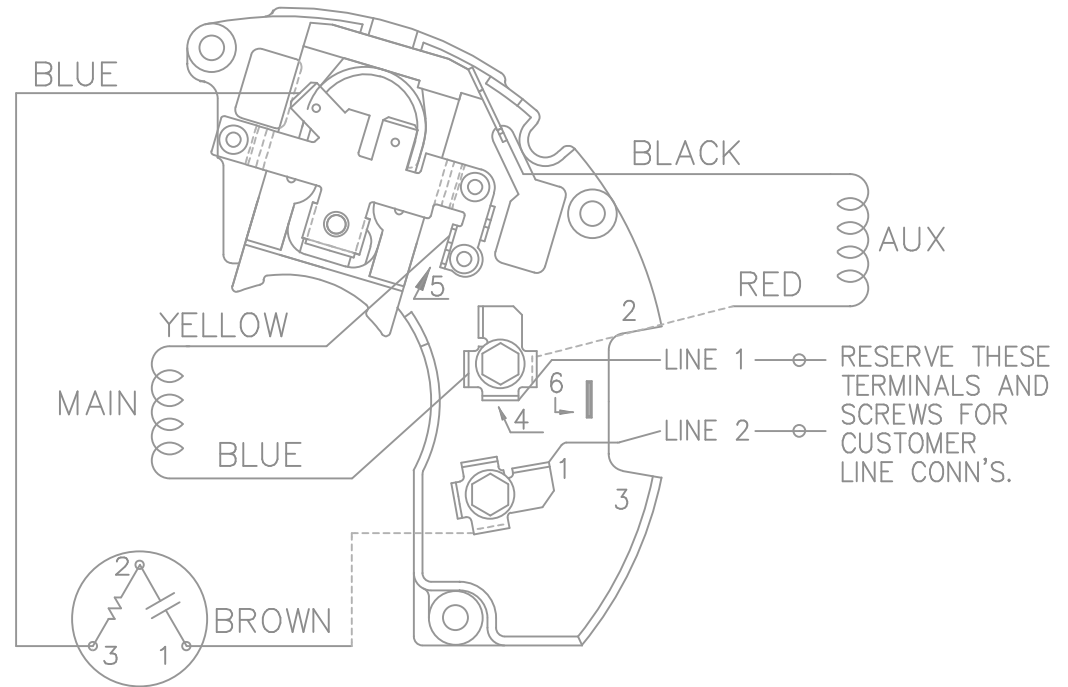
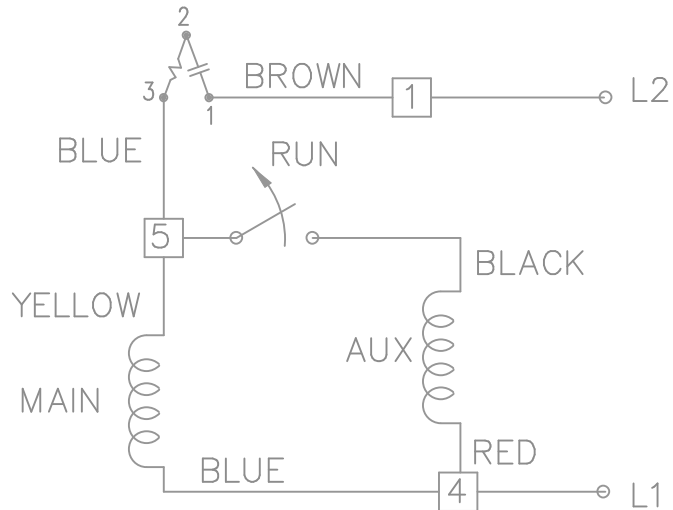
SS403813



| DASH | FR. | C | XB | DASH | FR. | C | XB |
|------|-----|------|------|------|-----|---|----|
| 575 | 48 | 9.34 | 5.94 | | | | |

| | | | | TOLERANCES UNLESS SPECIFIED | |  MARATHON ELECTRIC | DRAWN SP 21-01-2009 | | | | | | | |
|--|----------|--|--|-----------------------------|--------|---|---------------------|----------|----------|------|-------------|------|----|------|
| | | | | DEC. | INCHES | | CHK NB 21-01-2009 | | | | | | | |
| | | | | .X | ±.1 | | APPD SP 21-01-2009 | | | | | | | |
| | | | | .XX | ±.03 | | SCALE 3=8 | | | | | | | |
| | | | | .XXX | ±.005 | | REF SS78763 | | | | | | | |
| | | | | .XXXX | ±.0005 | FMF 07-2636 | | | | | | | | |
| | | | | ANG | ±7'30" | PREV | | | | | | | | |
| NO. | REVISION | | | BY & DATE | CHK | MAT'L. | FINISH | | | | | | | |
| THIS DRAWING IN DESIGN AND DETAIL IS OUR PROPERTY AND MUST NOT BE USED EXCEPT IN CONNECTION WITH OUR WORK ALL RIGHTS OF DESIGN AND INVENTION ARE RESERVED THIS IS AN ELECTRONICALLY GENERATED DOCUMENT - DO NOT SCALE THIS PRINT | | | | | | RFP | 21-01-2009 | CAD FILE | SS403813 | SIZE | DRAWING NO. | PAGE | OF | REV. |
| | | | | | | DIST | WP | | | A | SS403813 | | | |

SINGLE VOLTAGE – SPLIT PHASE
 REVERSIBLE ON TERM BOARD
 WITH OVERLOAD PROTECTION




VIEWING TERMINAL END

C.C.W. ROTATION SHOWN.

FOR C.W. ROTATION INTERCHANGE
 YELLOW & BLUE LEADS ON TERM 5 & 4.

DASH LINES INDICATE LEADS CONNECTED
 TO MOTOR SIDE OF SWITCH.

| | | | TOLERANCES UNLESS SPECIFIED | |  | DRAWN ML 01-27-1998 | |
|--|---------------------------------------|----------------|-----------------------------|-----------------|---|---------------------|-------------------------|
| | | | DEC. | INCHES | | CHK | GK 02-05-1988 |
| 5 | REDRAWN ON AUTOCAD | RWR 06-15-2004 | ML | .X | ± - | APPD | DRN 03-11-1988 |
| 4 | REVERSED L1 AND L2 CN19709 | AJS 01-16-1995 | GK | .XX | ± - | SCALE | 1=1 |
| 3 | REVISED LINE 2 LOCATION CN6427 | RM 01-28-1991 | GK | .XXX | ± - | REF | |
| 2 | ADDED CUSTOMER CONNECTION NOTE CN6011 | BW 08-03-1989 | GK | .XXXX | ± - | FMF | |
| NO. | REVISION | BY & DATE | CHK | ANG | ± - | PREV | |
| THIS DRAWING IN DESIGN AND DETAIL IS OUR PROPERTY AND MUST NOT BE USED EXCEPT IN CONNECTION WITH OUR WORK ALL RIGHTS OF DESIGN AND INVENTION ARE RESERVED THIS IS AN ELECTRONICALLY GENERATED DOCUMENT - DO NOT SCALE THIS PRINT | | | RFP | CAD FILE ee7195 | | SIZE | DRAWING NO. PAGE 1 OF 1 |
| | | | DIST | LB | | A | EE7195 5 |