

PRODUCT INFORMATION PACKET

Modal No: 056T17D5398
Catalog No: H803
3,1725,DP,56HZ,3/60/50/208-230/460
Open Drip Proof (ODP)



Regal and Marathon are trademarks of Regal Beloit Corporation or one of its affiliated companies.
©2017 Regal Beloit Corporation, All Rights Reserved. MC017097E

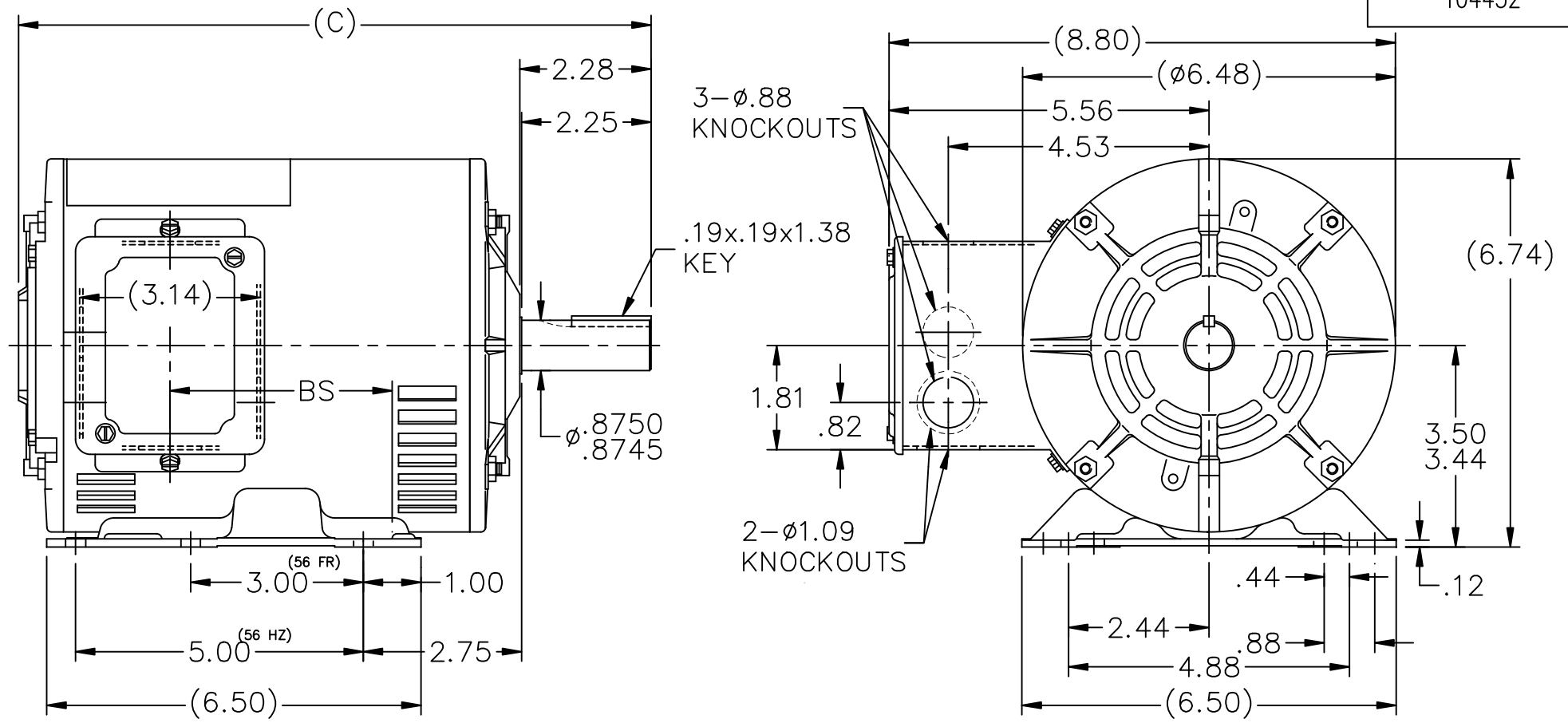


Nameplate Specifications

| | | | |
|----------------------------|----------------------|------------------------|----------------------|
| Output HP | 3 Hp | Output KW | 2.24 kW |
| Frequency | 60 Hz | Voltage | 208-230/460 V |
| Current | 9.2-8.6/4.3 A | Speed | 1725 rpm |
| Service Factor | 1.15 | Phases | 3 |
| Efficiency | 84 % | Duty | CONTINUOUS |
| Insulation Class | B | Design Code | B |
| KVA Code | K | Frame | 56HZ |
| Enclosure | DP | Overload Protector | NOT |
| Ambient Temperature | 40 °C | Drive End Bearing Size | 6205 |
| Opp Drive End Bearing Size | 6203 | UL | Recognized |
| CSA | Y | CE | Y |
| IP Code | 22 | | |

Technical Specifications

| | | | |
|-----------------------|------------------------|-----------------------|------------------------|
| Electrical Type | SQ CAGE IND RUN | Starting Method | ACROSS THE LINE |
| Poles | 4 | Rotation | REV |
| Mounting | RIGID | Motor Orientation | HORIZONTAL |
| Drive End Bearing | BALL | Opp Drive End Bearing | BALL |
| Frame Material | ROLLED STEEL | Shaft Type | 56FR-140T |
| Overall Length | 13.49 in | Frame Length | 9.56 in |
| Shaft Diameter | 0.63 in | Shaft Extension | 2.25 in |
| Assembly/Box Mounting | F1 ONLY | | |



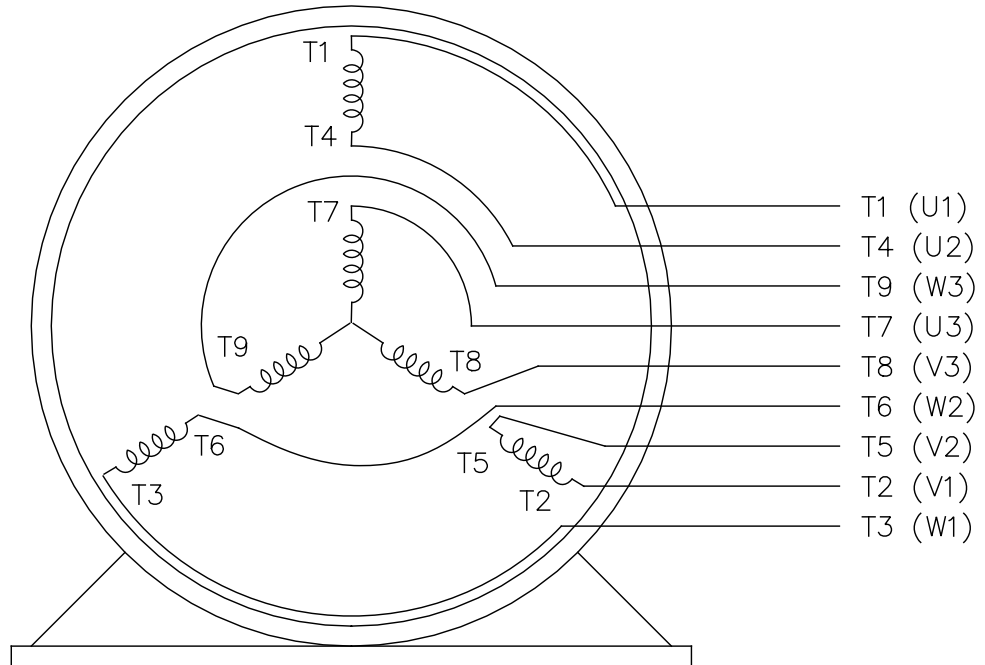
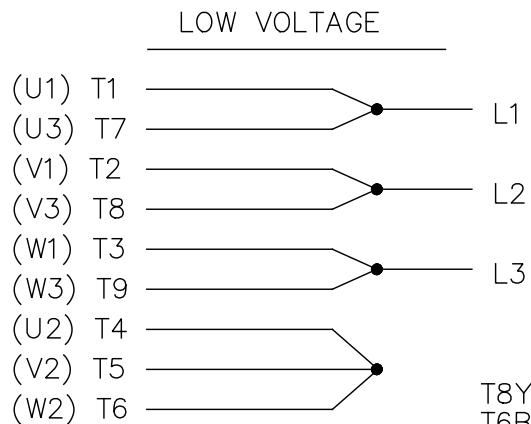
| DASH | FR. | C | BS/140T | DASH | FR. | C | BS/140T |
|------|------|-------|---------|------|------|-------|---------|
| | | | | 806 | 56HZ | 11.99 | 4.86 |
| | | | | 856 | " | 12.49 | 5.36 |
| 706 | 56HZ | 10.99 | 3.86 | 906 | " | 12.99 | 5.86 |
| 756 | " | 11.49 | 4.36 | 956 | " | 13.49 | 6.36 |

- NOTES:
1. CONDUIT BOX CAN BE ROTATED 180°.
 2. NAMPLATE READ FROM CONDUIT BOX SIDE.

| | | | | TOLERANCES UNLESS SPECIFIED | | MARATHON ELECTRIC | DRAWN MJD 05-18-1998 | | | | |
|--|--------------------------------------|--|--|-----------------------------|-----------------|---------------------------------------|----------------------|-------------|------------|----|------|
| | | | | DEC. | INCHES | | CHK | RJS | 05-20-1998 | | |
| | | | | .X | ±.1 | TITLE OUTLINE 56HZ - TS-DR. PR.-BB | APPD MRB 05-20-1998 | | | | |
| | | | | .XX | ±.02 | | SCALE 3=8 | | | | |
| | | | | .XXX | ±.005 | | REF | | | | |
| | | | | .XXXX | ±.0005 | | FMF | | | | |
| 1 | REM. 140T FROM OUTLINE ISAAC 11-0014 | | | TJF 01-13-2011 | | MAT'L. | PREV | | | | |
| NO. | REVISION | | | BY & DATE | | FINISH | | | | | |
| THIS DRAWING IN DESIGN AND DETAIL IS OUR PROPERTY AND MUST NOT BE USED EXCEPT IN CONNECTION WITH OUR WORK ALL RIGHTS OF DESIGN AND INVENTION ARE RESERVED THIS IS AN ELECTRONICALLY GENERATED DOCUMENT - DO NOT SCALE THIS PRINT | | | | RFP | CAD FILE 104452 | | SIZE | DRAWING NO. | PAGE | OF | REV. |
| | | | | DIST | WP | A | 104452 | | | 1 | |

EE7308

THREE PHASE
DUAL VOLTAGE MOTOR



VIEW OF TERMINAL END

REF.
WINDING DIAGRAM

T8Y, T2Y, T2BL, T4BX, T2EC, T2G
T6BZ, T2B, T6BL, T4AV, T6B, T4B

OPTIONAL CORD
CONNECTION

L1 — WHITE
L2 — RED
L3 — BLACK

| NO. | | REVISION | | BY & DATE | | CHK | | ANG | | FINISH | | PREV | |
|--|--|----------|------------|-----------------|-------|--------|--|--------------------|--|-----------|--|--------|--|
| 5 | CHG TO REGAL LOGO | SL | 09/10/2015 | AB | | | | | | | | | |
| 4 | REVISED IEC NOTATIONS | MSG | 11/15/2011 | CMN | .X | ±.1 | | | | | | | |
| 3 | ADDED IEC NOTATIONS... (U1), (V1) ETC. MU95194 | MSG | 5/10/2010 | MJS | .XX | ±.02 | | | | | | | |
| 2 | ADDED THE OPTIONAL CORD CONNECTION MU46318 | RDH | 04/24/2003 | DRS | .XXX | ±.005 | | | | | | | |
| 1 | REDRAWN | RM | 11/20/1990 | | .XXXX | ±.0005 | | | | | | | |
| | | | | | | | | | | | | | |
| THIS DRAWING IN DESIGN AND DETAIL IS OUR PROPERTY AND MUST NOT BE USED EXCEPT IN CONNECTION WITH OUR WORK ALL RIGHTS OF DESIGN AND INVENTION ARE RESERVED THIS IS AN ELECTRONICALLY GENERATED DOCUMENT - DO NOT SCALE THIS PRINT | | RFP | | CAD FILE ee7308 | | SIZE A | | DRAWING NO. EE7308 | | PAGE OF 5 | | REV. 5 | |
| | | | | DIST WP | | | | | | | | | |



Regal Beloit America, Inc.

DRAWN RM 11/20/1990

CHK ML 11/21/1990

APPD SAS 04/24/2003

TITLE CONNECTION DIAGRAM
3Ø - DUAL VOLTAGE MOTOR

SCALE 1=1

REF

FMF

CERTIFICATION DATA SHEET

Model#: 56T17D5398 B WINDING#: ZT400 NONE 3
 CONN. DIAGRAM: A-EE7308 ASSEMBLY: F1 ONLY
 OUTLINE: A-104452-956

TYPICAL MOTOR PERFORMANCE DATA

| HP | KW | SYNC. RPM | F.L. RPM | FRAME | ENCLOSURE | KVA CODE | DESIGN |
|-----|-----------|-----------|-----------|-------|-----------|----------|--------|
| 3&2 | 2.24&1.49 | 1800 | 1725&1425 | 56HZ | DP | K | B |

| PH | Hz | VOLTS | FL AMPS | START TYPE | DUTY | INSL | S.F | AMB°C | ELEVATION |
|----|-------|-----------------------------|-----------------------------|--------------------|----------------|------|-----------|-------|-----------|
| 3 | 60/50 | 208- 230/460#190/ 380 | 9.2- 8.6/4.3&7.2/3. 6 | ACROSS THE LINE | CONTINUOU S | B3 | 1.15/1.15 | 40 | 3300 |

| | | | | | |
|--------------------------|--------------------|------------------|----------|-----------------|--------------|
| FULL LOAD EFF: 84&84 | 3/4 LOAD EFF: 85.5 | 1/2 LOAD EFF: 85 | GTD. EFF | ELEC. TYPE | NO LOAD AMPS |
| FULL LOAD PF: 81&77.4 | 3/4 LOAD PF: 74 | 1/2 LOAD PF: 62 | 81.5 | SQ CAGE IND RUN | 4 / 2 |

| F.L. TORQUE | LOCKED ROTOR AMPS | L.R. TORQUE | B.D. TORQUE | F.L. RISE°C |
|-------------|-------------------|--------------|--------------|-------------|
| 9.1 LB-FT | 62 / 31 | 25 LB-FT 275 | 31 LB-FT 341 | 70 |

| SOUND PRESSURE @ 3 FT. | SOUND POWER | ROTOR WK^2 | MAX. WK^2 | SAFE STALL TIME | STARTS /HOUR | APPROX. MOTOR WGT |
|------------------------|-------------|--------------|------------|-----------------|--------------|-------------------|
| 56 dBA | 66 dBA | 0.14 LB-FT^2 | 20 LB-FT^2 | 12 SEC. | 2 | 48 LBS. |

*** SUPPLEMENTAL INFORMATION ***

| DE BRACKET TYPE | ODE BRACKET TYPE | MOUNT TYPE | ORIENTATION | SEVERE DUTY | HAZARDOUS LOCATION | DRIP COVER | SCREENS | PAINT |
|-----------------|------------------|------------|-------------|-------------|--------------------|------------|---------|---------------|
| STANDARD | STANDARD | RIGID | HORIZONTAL | FALSE | NONE | FALSE | NONE | GRAY (POWDER) |

| BEARINGS | | GREASE | SHAFT TYPE | SPECIAL DE | SPECIAL ODE | SHAFT MATERIAL | FRAME MATERIAL |
|----------|------|------------|------------|------------|-------------|--------------------------|----------------|
| DE | OPE | | | | | | |
| BALL | BALL | POLYREX EM | 56FR-140T | 140T | NONE | 1144 STRESSPROOF (C-223) | ROLLED STEEL |
| 6205 | 6203 | | | | | | |

| THERMO-PROTECTORS | | | | THERMISTORS | CONTROL | SPACE /n HEATERS |
|-------------------|------------|----------|----------|-------------|---------|------------------|
| THERMOSTATS | PROTECTORS | WDG RTDs | BRG RTDs | | | |
| NONE | NOT | NONE | NONE | NONE | FALSE | NONE VOLTS |

If Inverter equals NONE, contact factory for further information

*
N
O
T
E
S
*

| |
|---------------------------|
| INVERTER TORQUE: NONE |
| INV. HP SPEED RANGE: NONE |
| ENCODER: NONE |
| NONE NONE |
| NONE NONE PPR |
| BRAKE: NONE NONE |
| NONE P/N NONE |
| NONE NONE |
| NONE FT-LB NONE V NONE Hz |

Uncontrolled Copy

** Subject to change without notice.