

PRODUCT INFORMATION PACKET

Modal No: 254TTDCA6026
Catalog No: GT0022
15,1800,DP,254T,3/60/230/460
Open Drip Proof (ODP)



Regal and Marathon are trademarks of Regal Beloit Corporation or one of its affiliated companies.
©2017 Regal Beloit Corporation, All Rights Reserved. MC017097E

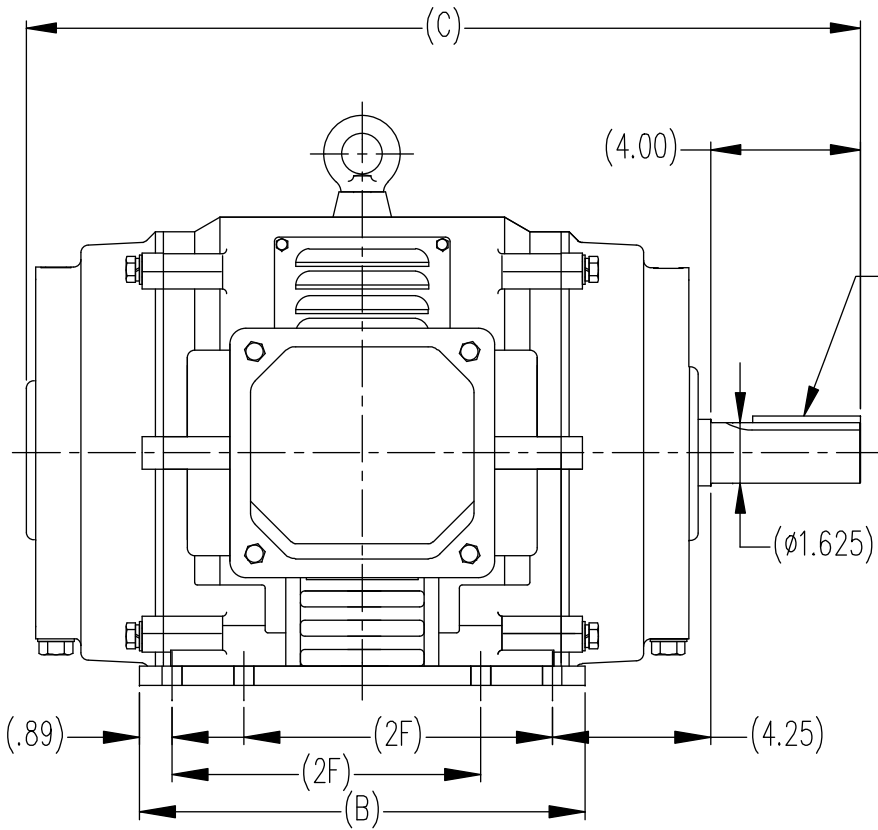


Nameplate Specifications

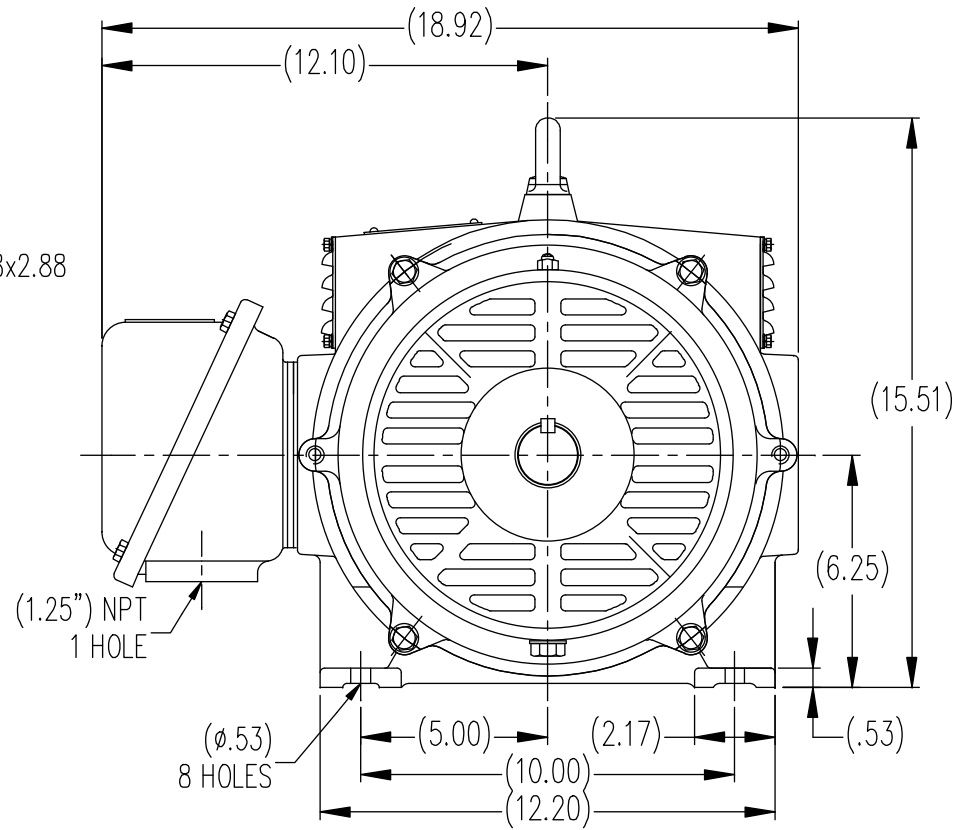
Output HP	15 Hp	Output KW	11.2 kW
Frequency	60 Hz	Voltage	230/460 V
Current	37/18.5 A	Speed	1770 rpm
Service Factor	1.15	Phases	3
Efficiency	93 %	Duty	CONTINUOUS
Insulation Class	F	Design Code	B
KVA Code	G	Frame	254T
Enclosure	DP	Overload Protector	NOT
Ambient Temperature	40 °C	Drive End Bearing Size	6309
Opp Drive End Bearing Size	6208	UL	Recognized
CSA	Y	CE	Y
IP Code	22		

Technical Specifications

Electrical Type	SQ CAGE INV RATED	Starting Method	LINE OR INVERTER
Poles	4	Rotation	REV
Mounting	RIGID	Motor Orientation	HORIZONTAL
Drive End Bearing	BALL	Opp Drive End Bearing	BALL
Frame Material	CAST IRON	Shaft Type	T
Overall Length	22.64 in	Shaft Diameter	1.63 in
Shaft Extension	4 in	Assembly/Box Mounting	F1/F2 CAPABLE



.38x.38x2.88
KEY



DIMENSIONS IN TABLE ARE CONSIDERED (REFERENCE)

(MAY NOT BE DRAWN TO SCALE)

254T	22.64	12.00	8.25
256T	24.22	13.59	10.00
FRAME	C	B	2F

				TOLERANCES UNLESS SPECIFIED		REGAL REGAL-BELOIT CORPORATION		DRAWN MSG 12-25-2009			
				DEC.	INCHES			CHK TJW 12-16-2009			
				.X	±.1	APPD SB 12-16-2009		SCALE 1=1			
				.XX	±.03	TITLE 254/256T FR. - ODP - CAST IRON		REF			
				.XXX	±.005	MAT'L		FMF HUADA			
				.XXXX	±.0005	FINISH		PREV			
NO.	REVISION	BY & DATE	CHK	ANG	±1/2	RFP	CAD FILE	SS620237	SIZE	DRAWING NO.	REV.
THIS DRAWING IN DESIGN AND DETAIL IS OUR PROPERTY AND MUST NOT BE USED EXCEPT IN CONNECTION WITH OUR WORK ALL RIGHTS OF DESIGN AND INVENTION ARE RESERVED THIS IS AN ELECTRONICALLY GENERATED DOCUMENT - DO NOT SCALE THIS PRINT						DIST			B	SS620237	

LOW VOLTAGE



HIGH VOLTAGE



VIEW OF TERMINAL END

				TOLERANCES UNLESS SPECIFIED		 REGAL - BELOIT CORPORATION	DRAWN PGK 06-04-1997						
NO.	REVISION	BY & DATE	CHK	ANG	±		UNIT	CHK	ML 06-05-1997				
E	CORRECTED IEC MARKINGS ECD-0111208	WGJ 01-23-2017	EMH	DEC.		INCHES							
D	RE-DRAWN WITH REGAL LOGO ECD-0110493	WGJ 09-30-2016	EMH	.X	±.1			APPD GK 06-15-1997					
8	ADDED IEC DESIGNATIONS MU95020	TJW 4/30/2010	MJS	.XX	±.02		TITLE	SCALE					
7	REVISED HIGH VOLTAGE L2 WAS L3 CN52600-354	MRB 09-21-1998		.XXX	±.005		CONNECTION DIAGRAM	REF					
6	REDRAWN ON CADD	PGK 06-05-1997		.XXXX	±.0005		DELTA CON. - 3Ø - 9 LEADS	FMF					
					±7'30"		MAT'L.	PREV					
							FINISH						
THIS DRAWING IN DESIGN AND DETAIL IS OUR PROPERTY AND MUST NOT BE USED EXCEPT IN CONNECTION WITH OUR WORK ALL RIGHTS OF DESIGN AND INVENTION ARE RESERVED THIS IS AN ELECTRONICALLY GENERATED DOCUMENT - DO NOT SCALE THIS PRINT							RFP	CAD FILE EE7308K	SIZE	DRAWING NO.	PAGE	OF	REV.
							DIST		A	EE7308K			E

CERTIFICATION DATA SHEET

Model#: 254TTDCA6026 BD WINDING#: CHT25440004 NONE 1
 CONN. DIAGRAM: EE7308K ASSEMBLY: F1/F2 CAPABLE
 OUTLINE: SS620237

TYPICAL MOTOR PERFORMANCE DATA

HP	KW	SYNC. RPM	F.L. RPM	FRAME	ENCLOSURE	KVA CODE	DESIGN
15&10	11.2&7.5	1800	1770&1475	254T	DP	G	B

PH	Hz	VOLTS	FL AMPS	START TYPE	DUTY	INSL	S.F	AMB°C	ELEVATION
3	60/50	230/460#190/ 380	37/18.5&31.5/ 15.7	LINE OR INVERTER	CONTINUOU S	F7	1.15/1.15	40	3300

FULL LOAD EFF: 93&91	3/4 LOAD EFF: 93	1/2 LOAD EFF: 92.4	GTD. EFF	ELEC. TYPE	NO LOAD AMPS
FULL LOAD PF: 81&78	3/4 LOAD PF: 76	1/2 LOAD PF: 65	92.4	SQ CAGE INV RATED	16.4 / 8.2

F.L. TORQUE	LOCKED ROTOR AMPS	L.R. TORQUE	B.D. TORQUE	F.L. RISE°C
44.5 LB-FT	220 / 110	89 LB-FT 200	120 LB-FT 270	45

SOUND PRESSURE @ 3 FT.	SOUND POWER	ROTOR WK^2	MAX. WK^2	SAFE STALL TIME	STARTS /HOUR	APPROX. MOTOR WGT
74 dBA	84 dBA	2.2 LB-FT^2	90 LB-FT^2	20 SEC.	2	300 LBS.

*** SUPPLEMENTAL INFORMATION ***

DE BRACKET TYPE	ODE BRACKET TYPE	MOUNT TYPE	ORIENTATION	SEVERE DUTY	HAZARDOUS LOCATION	DRIP COVER	SCREENS	PAINT
STANDARD	STANDARD	RIGID	HORIZONTAL	FALSE	NONE	FALSE	NONE	BLUE (ENAMEL)

BEARINGS		GREASE	SHAFT TYPE	SPECIAL DE	SPECIAL ODE	SHAFT MATERIAL	FRAME MATERIAL
DE	OPE						
BALL	BALL	POLYREX EM	T	NONE	NONE	1045 HOT ROLLED (C-204)	CAST IRON
6309	6208						

THERMO-PROTECTORS				THERMISTORS	CONTROL	SPACE /n HEATERS
THERMOSTATS	PROTECTORS	WDG RTDs	BRG RTDs			
NONE	NOT	NONE	NONE	NONE	FALSE	NONE VOLTS

If Inverter equals NONE, contact factory for further information

*
N
O
T
E
S
*

INVERTER TORQUE: VARIABLE 10:1 INV. HP SPEED RANGE: NONE
ENCODER: NONE NONE NONE NONE NONE PPR
BRAKE: NONE NONE NONE P/N NONE NONE NONE NONE FT-LB NONE V NONE Hz

Date: 6/19/2017

Customer:

Attention:

Submitted by: FAREEDA DUDEKULA



254TTDCA6026

Submital

Data @ 460 V

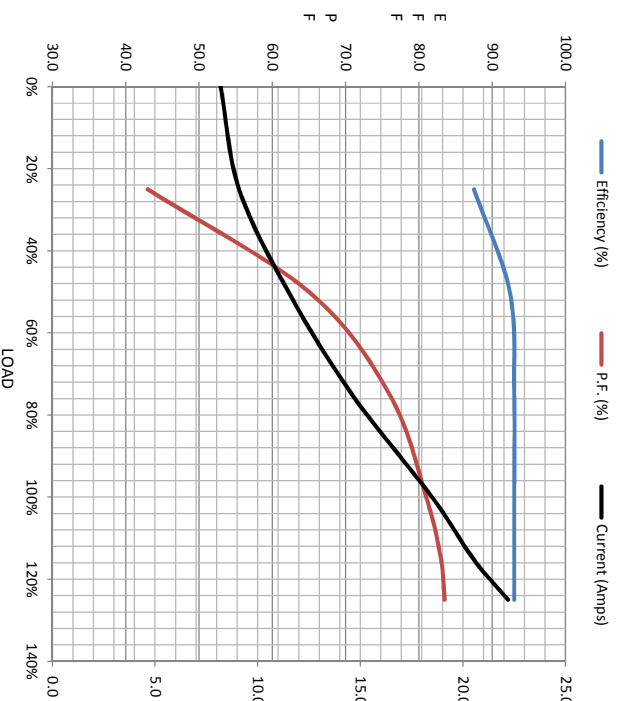
Load	Motor Load Data							
	0%	25%	50%	75%	100%	115%	125%	LR
Current (Amps)	8.2	9.1	11.5	14.6	18.5	20.5	22.2	110
Torque (ft-lb)	0.00	11.0	22.1	33.2	44.5	51.3	55.9	89.0
RPM	1800	1790	1785	1777	1770	1765	1762	0
Efficiency (%)		87.5	92.4	93.0	93.0	93.0	93.0	
P.F. (%)	5.0	43.0	65.0	76.0	81.0	83.0	83.5	32.0

Motor Speed Data

	LR	Pull-Up	BD	Rated	Idle
Speed (rpm)	0	900	1620	1770	1800
Current (Amps)	110	99.0	75.0	18.5	8.2
Torque (ft-lb)	89.0	80.0	120	44.5	0.00

Information Block

HP	15.0
Sync. RPM	1800
Frame	254
Enclosure	DP
Construction	TDC
Voltage	30/460#190/38 V
Frequency	60 Hz
Design	B
LR Code letter	G
Service Factor	1.15
Temp Rise @ FL	40 °C
Duty	CONT
Ambient	40 °C
Elevation	1,000 feet
Rotor/Shaft wkt	2.20 Lb-Fe
Rel Wdg	CHT25440004 NONE
Sound Pressure @ 1M	74 dBA
VFD Rating	VARIABLE 10:1
Outline Dwg	SS620237
Conn. Diag	EE7308K
Additional Specifications:	
EQUIV CKT (OHMS / PHASE)	
R1	R2
0.4120	0.2340
X1	X2
1.3440	1.4530
Xm	Xm
	30.4670



Speed - Torque Curve

