

PRODUCT INFORMATION PACKET

Modal No: 5KC42GN0014
Catalog No: C261
1/2, 1800, TEFC, 56, 1/60/115/230
Totally Enclosed Fan Cooled (TEFC)



Regal and Marathon are trademarks of Regal Beloit Corporation or one of its affiliated companies.
©2017 Regal Beloit Corporation, All Rights Reserved. MC017097E

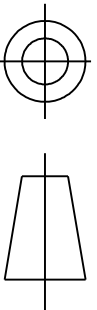


Nameplate Specifications

Output HP	0.5 Hp	Output KW	0.37 kW
Frequency	60 Hz	Voltage	115/208-230 V
Current	8.6,4.1-4.3 A	Speed	1725 rpm
Service Factor	1.15	Phases	1
Efficiency	64.9 %	Duty	CONT
Insulation Class	B	Design Code	-
KVA Code	M	Frame	56
Enclosure	TEFC	Overload Protector	N/R
Ambient Temperature	40 °C	Drive End Bearing Size	6203
Opp Drive End Bearing Size	6203	UL	Recognized
CSA	Yes	CE	N

Technical Specifications

Electrical Type	Capacitor start(CSIR)	Starting Method	SM
Poles	4	Rotation	CCW/CW
Mounting	WB	Motor Orientation	ANY
Drive End Bearing	BALL	Opp Drive End Bearing	BALL
Frame Material	Rolled Steel	Overall Length	11 in
Frame Length	5.72 in	Shaft Diameter	0.63 in
Shaft Extension	1.88 in		

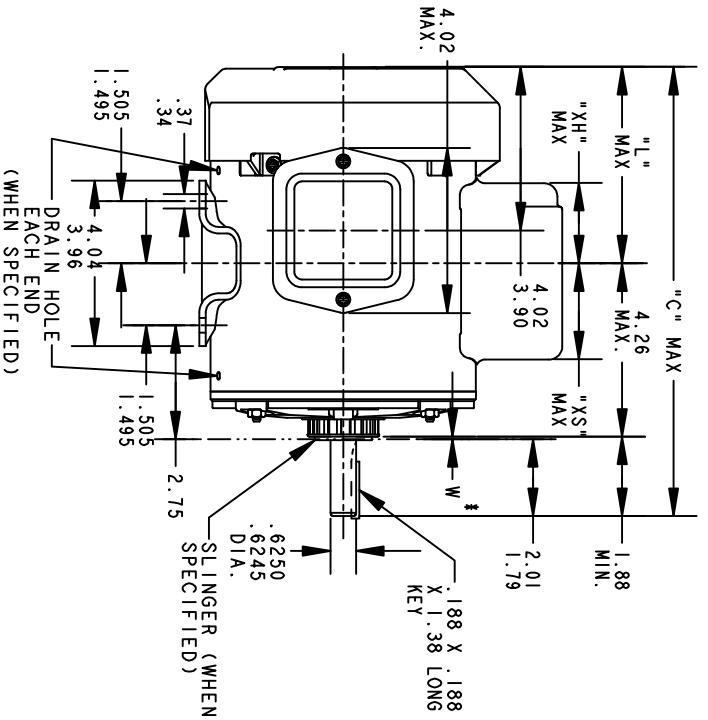
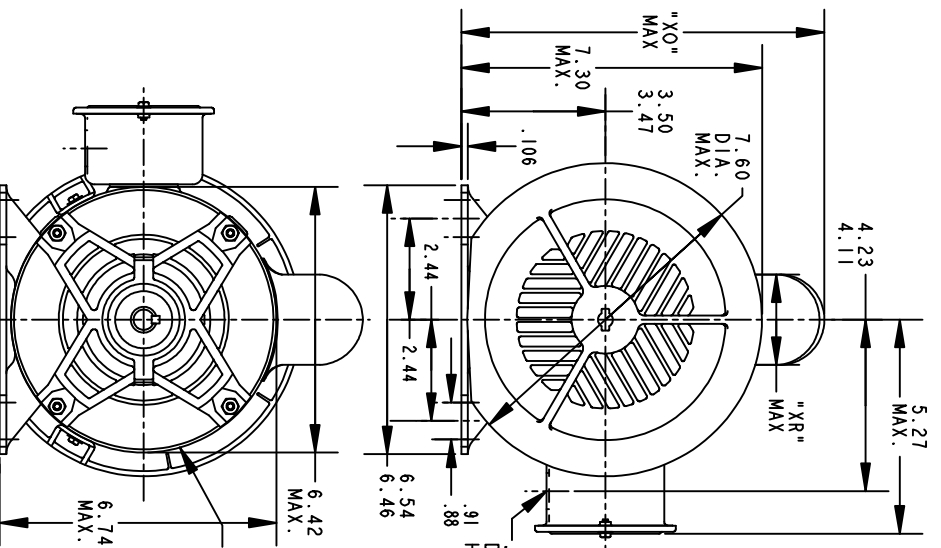


THIRD ANGLE PROJECTION

REVISIONS

REV.	DESCRIPTION	DATE	APPROVED
16	AADED PT# 9 PER DSI0-0516	05/07/10	PRAVEEN.K

REV 15
 SHEET 1
 52A107631
 DRAWING NO. A
 SIZE



VIEW OF P. E.
 END SHIELD

ALL DIMENSIONS ARE IN INCHES

*W IS A VARIABLE CLEARANCE DUE TO VARIATIONS IN PARTS AND ASSEMBLY

P	TYPE	GE SIZE	NEMA FR.	"C"	"L"	"XH"	"XO"	"XR"	"XS"	MIN. SHELL
9	KC	49	56	12.96	6.81	3.58	8.24	1.60	2.17	7.68
8	KC	48	56	13.71	6.05	4.33	8.26	2.40	2.92	8.43
7	KC	49	56	11.43	5.28	2.00	8.26	1.60	2.48	6.15
6	KC	49	56	12.43	6.28	3.51	8.22	1.60	2.24	7.15
5	KC	49	56	12.43	6.28	3.51	8.94	2.40	2.24	7.15
4	KC	49	56	12.96	6.81	3.58	8.94	2.40	2.17	7.68
3	KC	46	56	11.83	5.68	2.91	8.94	2.40	2.84	6.55
2	KC	46	56	11.83	5.68	2.91	8.84	2.22	1.63	6.55
1	KC	42	56	11.00	4.85	2.08	8.84	2.22	2.46	5.72

REGAL-BELOTT CORPORATION

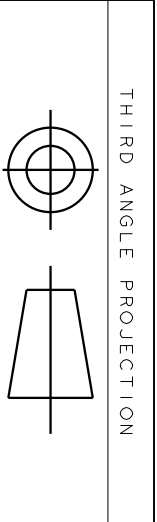
OUTLINE

GENERAL PURPOSE MOTOR TEFC - BALL BEARING - WELDED BASE FWF - 40 FRAME REDESIGN

SIGNATURES		DATE
MODEL	M.D. PAPE	10/23/90
DETAIL		
CHECKED		
ENGRG		
FOR ADDITIONAL INFO REFER TO:		
APPLIED PRACTICES	QUALITY	
DIMENSIONS ARE IN INCHES	ISSUED	M.D. PAPE 04/27/94
MATERIAL	SOLID MODEL: 52A107631	

SIZE	DRAWING	SCALE	REF. No.	SHEET
A	A	0.250		1 of 1

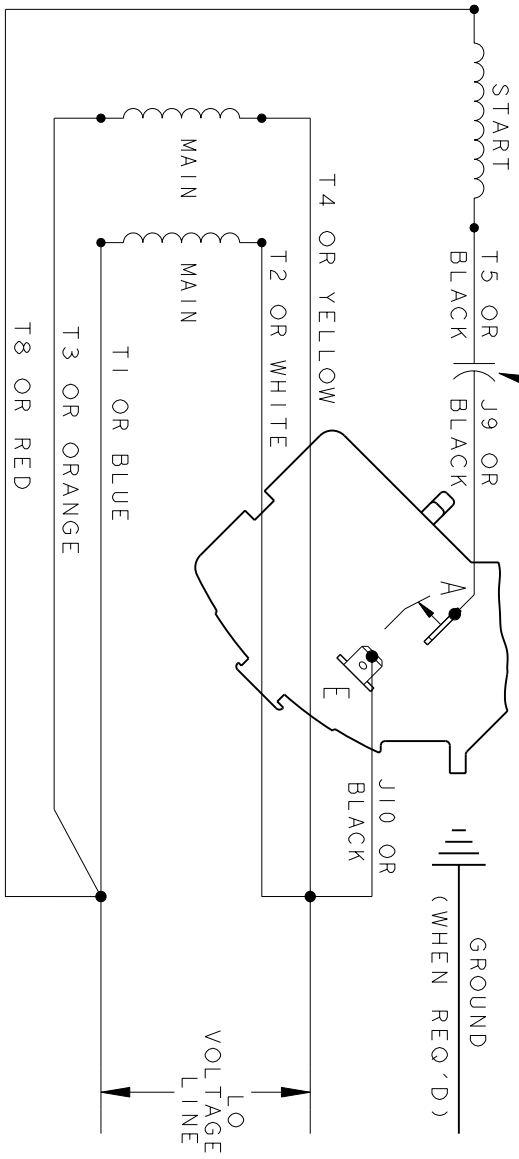
52A107631 15



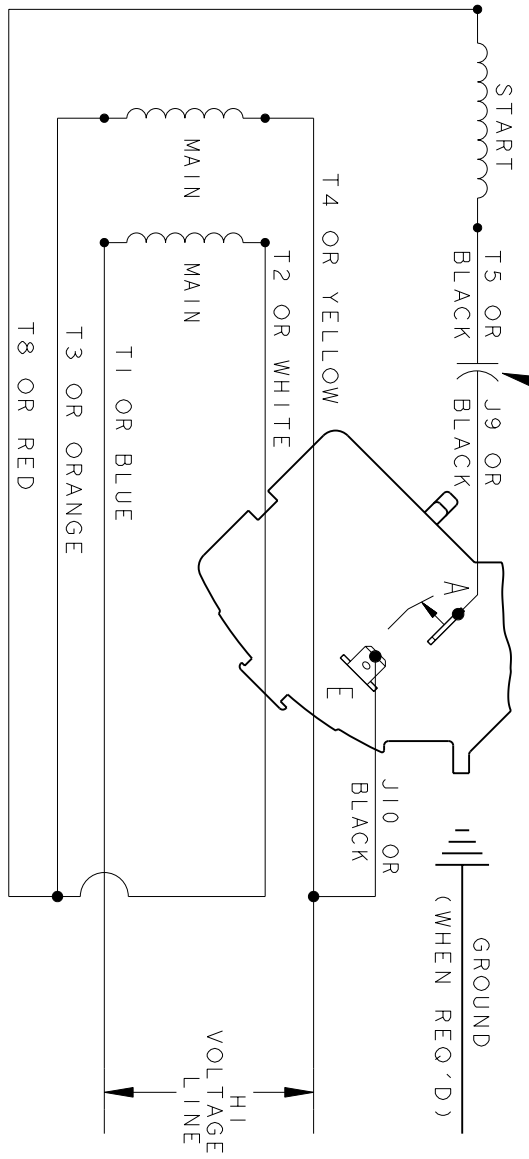
REV.	DESCRIPTION	DATE	APPROVED
3	UPDATED FORMAT	01/04/06	MAM

CCW/CW ROTATION - DUAL VOLTAGE
TYPE KC OR KH

CAPACITOR AS SHOWN FOR KC MOTORS ONLY. LEAD T5 BLACK CONNECTED DIRECTLY TO TERMINAL BOARD FOR KH MOTORS.



CAPACITOR AS SHOWN FOR KC MOTORS ONLY. LEAD T5 BLACK CONNECTED DIRECTLY TO TERMINAL BOARD FOR KH MOTORS.



NOTE#1 - TO REVERSE ROTATION, INTERCHANGE T8 RED AND J10 BLACK LEADS.
NOTE#2 - WHEN MORE THAN ONE CAPACITOR IS USED, CONNECT IN PARALLEL.

SWITCH (H) - 115D958AA

REF. DIAG. - 113A326 CONNECTION LABEL - 52X332917

SIGNATURES		DATE	
MODEL	M.D. PAPER	06/29/87	
DETAIL			
CHECKED			
ENGRG			
MFG			
QUALITY			
ISSUED	M.D.P.	06/29/87	
APPLIED PRACTICES			
DIMENSIONS ARE IN INCHES			
MATERIAL	SOLID MODEL: 52A105381BA		

TITLE		SCALE: 1.000		REF. No.:	
REGAL-BELOIT CORPORATION		A			
CONNECTION DIAGRAM		FME:		30 FRAME SWITCH REDESIGN	
52A105381BA		REV		3	
SHEET 1 of 1					