

PRODUCT INFORMATION PACKET

marathon[®]
Motors

Modal No: 5KC49UN6065
Catalog No: C264
1/2, 1200, TEFC, 56, 1/60/115/230
Totally Enclosed Fan Cooled (TEFC)



Regal and Marathon are trademarks of Regal Beloit Corporation or one of its affiliated companies.
©2017 Regal Beloit Corporation, All Rights Reserved. MC017097E

REGAL

Nameplate Specifications

Output HP	0.5 Hp	Output KW	0.37 kW
Frequency	60 Hz	Voltage	115/230 V
Current	9.4,4.7 A	Speed	1140 rpm
Service Factor	1.15	Phases	1
Efficiency	57.7 %	Duty	CONT
Insulation Class	B	KVA Code	K
Frame	56	Enclosure	TEFC
Overload Protector	N/R	Ambient Temperature	40 °C
Drive End Bearing Size	6203	Opp Drive End Bearing Size	6203
UL	Recognized	CSA	Yes
CE	N		

Technical Specifications

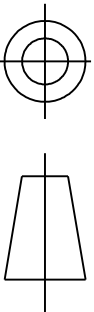
Electrical Type	Capacitor start(CSIR)	Starting Method	SM
Poles	6	Rotation	CCW/CW
Mounting	WB	Motor Orientation	ANY
Drive End Bearing	BALL	Opp Drive End Bearing	BALL
Frame Material	Rolled Steel	Overall Length	12.96 in
Frame Length	7.68 in	Shaft Diameter	0.63 in
Shaft Extension	1.88 in		



REVISIONS

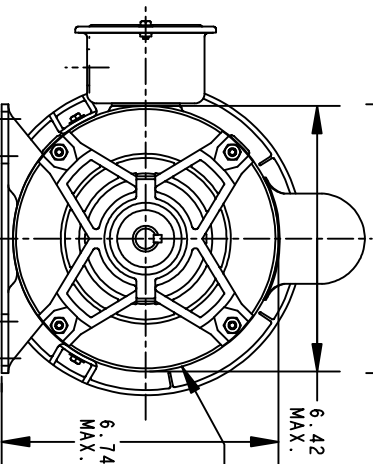
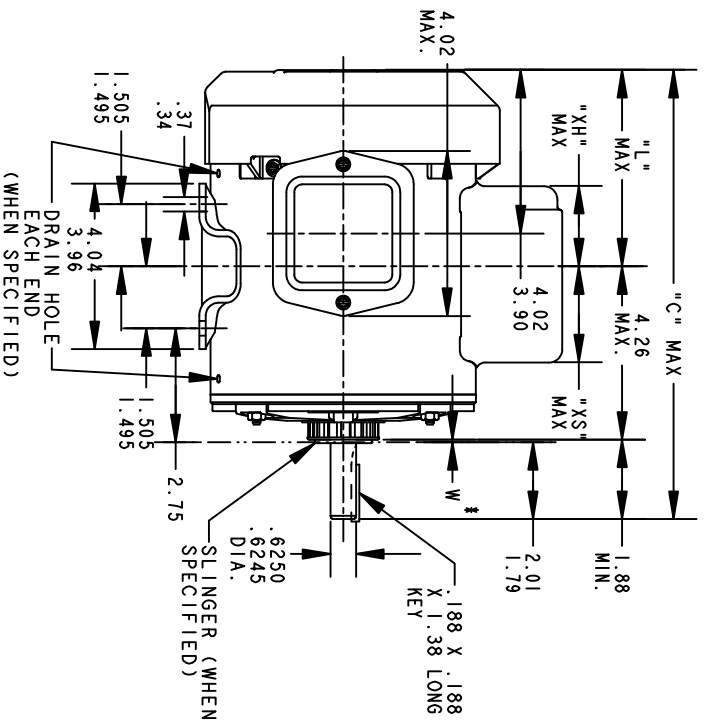
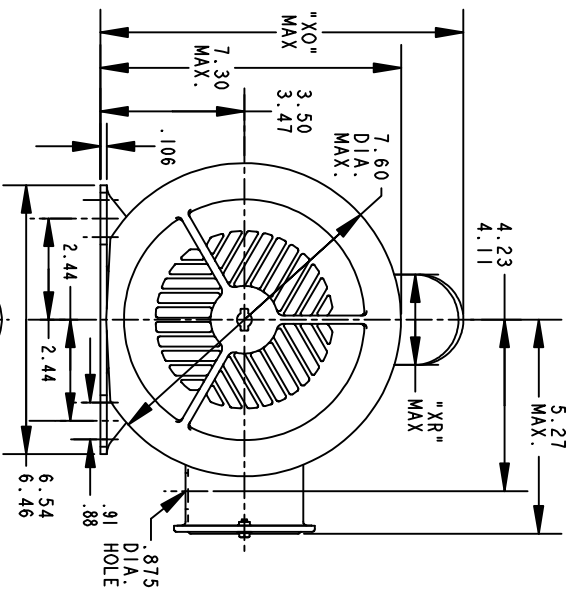
REV.	DESCRIPTION	DATE	APPROVED
16	AADED PT# 9 PER DS10-0516	05/07/10	PRAVEEN.K

THIRD ANGLE PROJECTION

SHEET
—REV
15

52A107631

DRAWING NO.

SIZE
AVIEW OF P. E.
END SHIELD* W IS A VARIABLE CLEARANCE DUE TO
VARIATIONS IN PARTS AND ASSEMBLY

ALL DIMENSIONS ARE IN INCHES

	9	8	7	6	5	4	3	2	1	P
KC	49	48	49	49	49	49	46	46	42	GE
KC	56	56	56	56	56	56	56	56	56	SIZE
KC	56	56	56	56	56	56	56	56	56	NEMA
KC	56	56	56	56	56	56	56	56	56	FR.
KC	56	56	56	56	56	56	56	56	56	"C"
KC	56	56	56	56	56	56	56	56	56	"L"
KC	56	56	56	56	56	56	56	56	56	"XH"
KC	56	56	56	56	56	56	56	56	56	"XO"
KC	56	56	56	56	56	56	56	56	56	"XR"
KC	56	56	56	56	56	56	56	56	56	"XS"
KC	56	56	56	56	56	56	56	56	56	MIN. SHELL

SIGNATURES

DATE



REGAL-BELOIT CORPORATION

TITLE

OUTLINE

GENERAL PURPOSE MOTOR TEFC - BALL

BEARING - WELDED BASE FMF - 40 FRAME REDESIGN

SIZE DRAWING
A

52A107631

REV
15

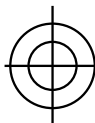
SCALE: 0.250

REF. No: .

SHEET 1 of 1

FOR ADDITIONAL INFO REFER TO:	QUALITY	ISSUED	M.D.PAPE	04/21/94
APPLIED PRACTICES	ISSUED	M.D.PAPE	04/21/94	
DIMENSIONS ARE IN INCHES	ISSUED	M.D.PAPE	04/21/94	
MATERIAL	ISSUED	M.D.PAPE	04/21/94	

MODEL	M.D.PAPE	10/23/90
DETAIL	M.D.PAPE	10/23/90
CHECKED	M.D.PAPE	10/23/90
ENGRG	M.D.PAPE	10/23/90
MFG	M.D.PAPE	10/23/90
FOR ADDITIONAL INFO REFER TO:	M.D.PAPE	10/23/90

THIRD ANGLE PROJECTION		REVISIONS		
	REV.	DESCRIPTION	DATE	APPROVED
	3	UPDATED FORMAT	01/04/06	MAM

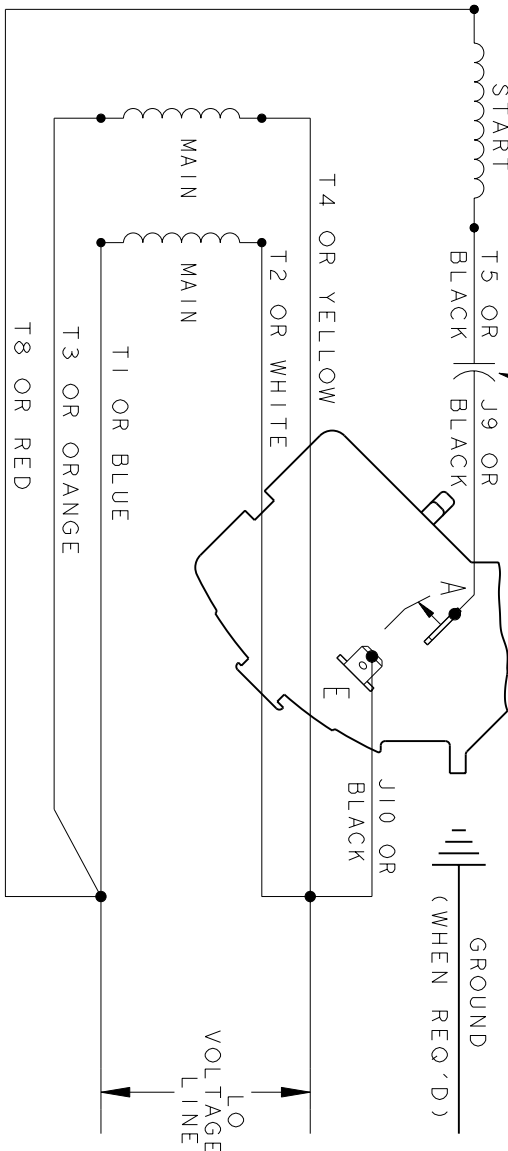
REV 3

52A105381BA

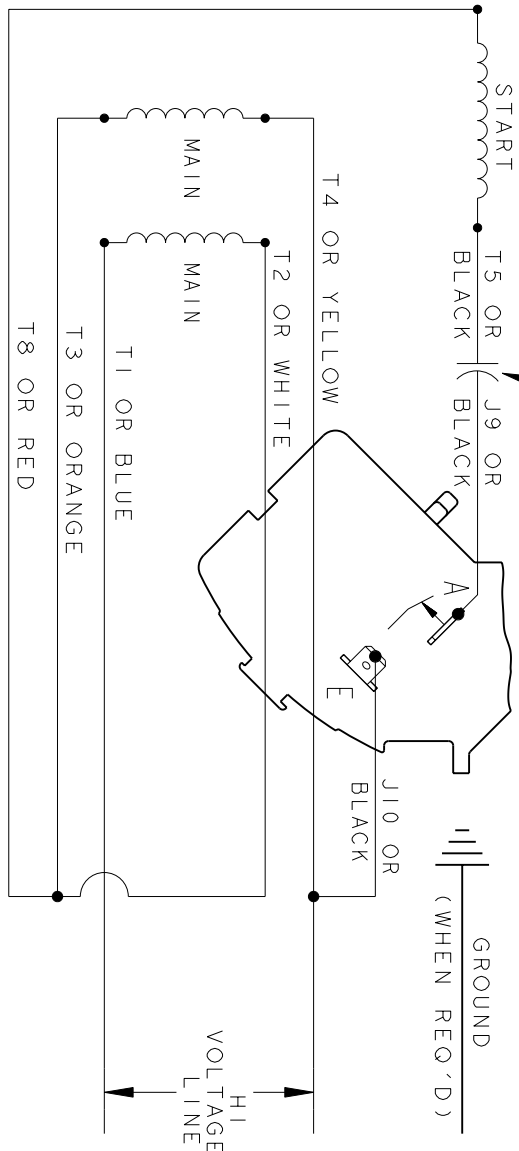
SIZE DRAWING NO.

CCW/CW ROTATION - DUAL VOLTAGE
TYPE KC OR KH

CAPACITOR AS SHOWN FOR KC MOTORS ONLY. LEAD T5 BLACK CONNECTED DIRECTLY TO TERMINAL BOARD FOR KH MOTORS.




CAPACITOR AS SHOWN FOR KC MOTORS ONLY. LEAD T5 BLACK CONNECTED DIRECTLY TO TERMINAL BOARD FOR KH MOTORS.



NOTE#1 - TO REVERSE ROTATION, INTERCHANGE T8 RED AND J10 BLACK LEADS.
NOTE#2 - WHEN MORE THAN ONE CAPACITOR IS USED, CONNECT IN PARALLEL.

SWITCH (H) - 115D958AA

REF. DIAG. - 113A326
CONNECTION LABEL - 52X332917

SIGNATURES		DATE	 REGAL-BELOIT CORPORATION	
MODEL	M.D.PAPE	06/29/87		
DETAIL	.	.		
CHECKED	.	.		
ENGRG	.	.		
FOR ADDITIONAL INFO REFER TO:	MFG	.	FME: 30 FRAME SWITCH REDESIGN	
APPLIED PRACTICES	QUALITY	.		
DIMENSIONS ARE IN INCHES	ISSUED	M.D.P. 06/29/87		
MATERIAL	SOLID MODEL: 52A105381BA			
SCALE: 1.000			REF. No: .	SHEET 1 of 1

CONNECTION DIAGRAM

52A105381BA

REV 3