

PRODUCT INFORMATION PACKET

marathon[®]
Motors

Modal No: 5KH32GNB811X
Catalog No: 4805
1/3,1725/1425,DP,48Y,1/60/100-120/200-240
Carbonator Pump



Regal and Marathon are trademarks of Regal Beloit Corporation or one of its affiliated companies.

©2017 Regal Beloit Corporation, All Rights Reserved. MC017097E

REGAL

Nameplate Specifications

Output HP	0.33 Hp	Output KW	0.25 kW
Frequency	60 Hz	Voltage	100-120/200-240 V
Current	5.5-5.6,2.7-2.8 A	Speed	1725 rpm
Service Factor	1	Phases	1
Efficiency	62 %	Duty	CONT
Insulation Class	B	KVA Code	L
Frame	48Y	Enclosure	DP
Overload Protector	AUTO	Ambient Temperature	40 °C
Drive End Bearing Size	6203	Opp Drive End Bearing Size	6203
UL	Recognized	CSA	Yes
CE	N		

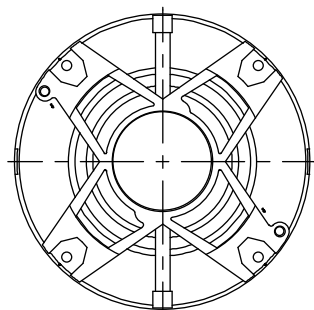
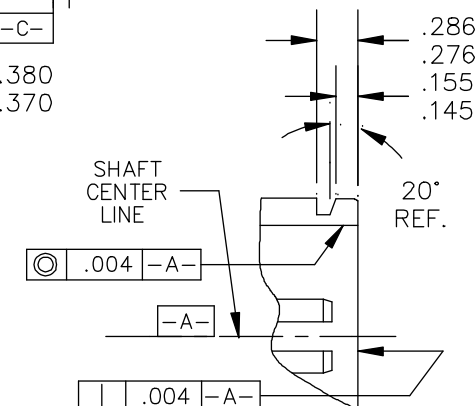
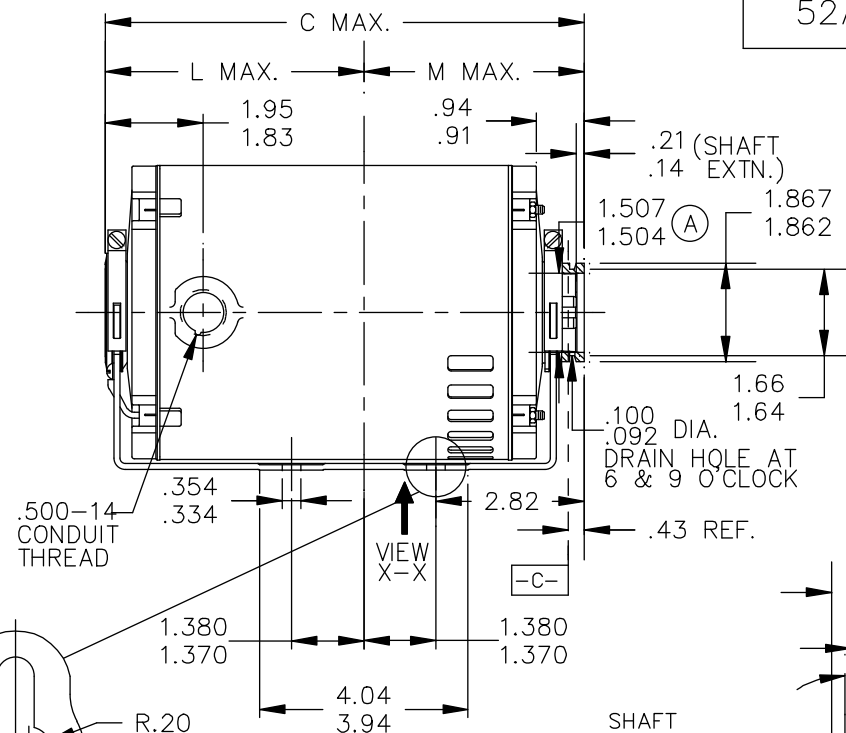
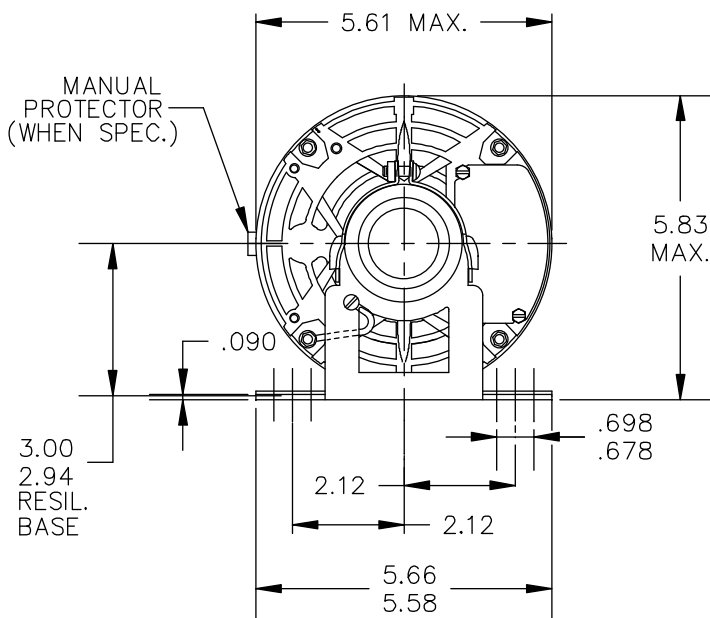
Technical Specifications

Electrical Type	Split Phase	Starting Method	SM
Poles	4	Rotation	CCW/CW
Mounting	RB	Motor Orientation	ANY
Drive End Bearing	BALL	Opp Drive End Bearing	BALL
Frame Material	Rolled Steel	Overall Length	7.69 in
Frame Length	5.16 in	Shaft Diameter	0.63 in
Shaft Extension	0.17 in		

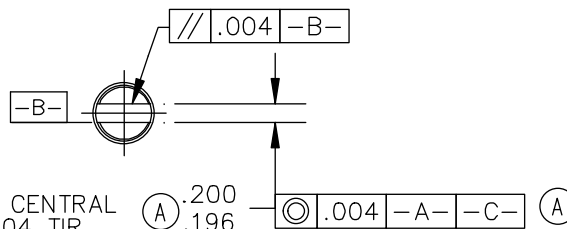
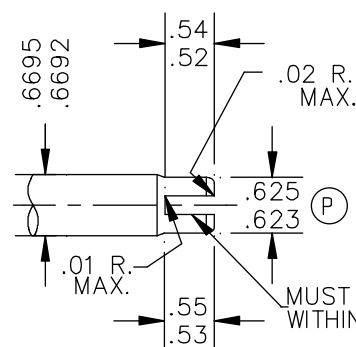
CONTROL
SURFACES
&
DIMENSIONS

(P) PROC.
(E) ENG.
(A) APPL.
(R) REG.

52A111766



VIEW SHOWING
P.E.
VENTILATION
OPENINGS



6	KH	38	48Y	9.75	5.60	4.28
5	KH	37	48Y	9.15	5.01	4.28
4	KH	36	48Y	8.75	4.61	4.28
3	KH	35	48Y	8.32	4.18	4.28
2	KH	33	48Y	7.94	3.80	4.28
1	KH	32	48Y	7.69	3.55	4.28
P	TYPE	RBC SIZE	NEMA FR	C	L	M

NO.	REVISION	BY & DATE	CHK	ANG	TOLERANCES UNLESS SPECIFIED	
					DEC.	INCHES
4	ADDED MANUAL PROT. NOTE PER SAMPLE DS13-2736	GRB 05/23/13	GRB	.X	±0.1	
3	CHG GD LD FROM 4:30 TO 7:30 PER IS11-0510 & REDRAWN IN DRAFT SIGHT	UD 9/25/12	PKG	.XX	±0.02	
				.XXX	±0.005	
2	UPDATED PER ISO7-0144	MDU 02/20/07		.XXXX	±0.0005	
					±1.0	



REGAL-BELOIT CORPORATION

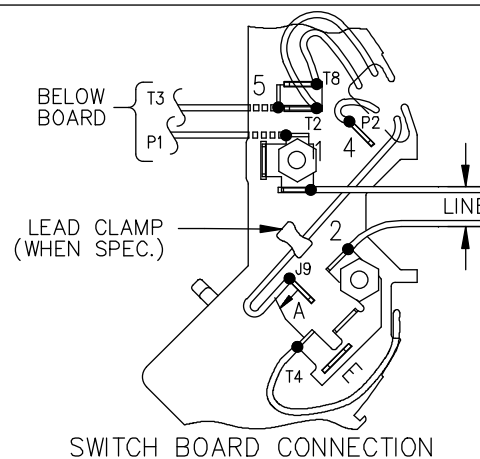
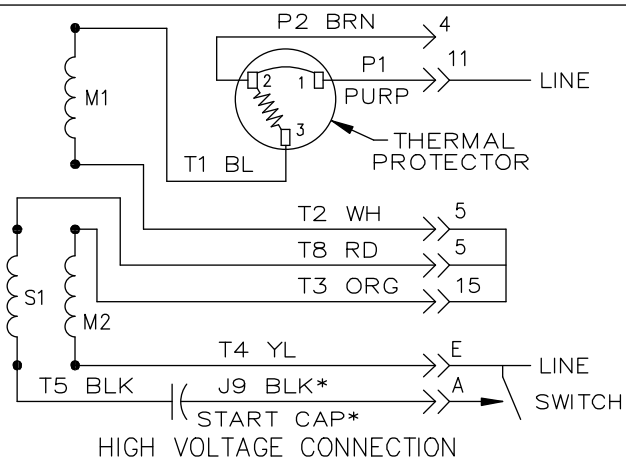
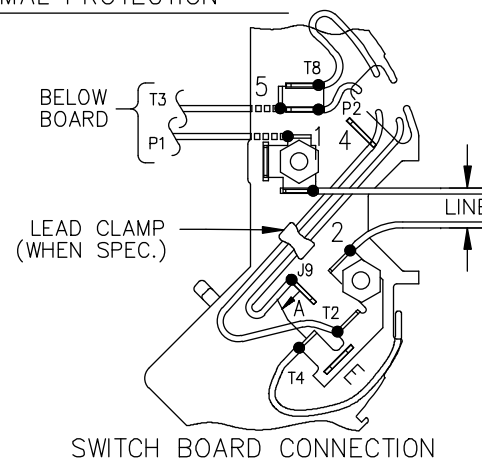
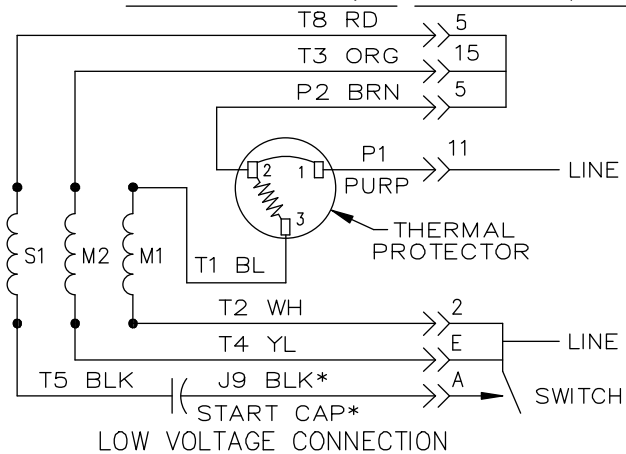
TITLE OUTLINE
CARBONATOR PUMP-DRIP PROOF -RESIL. BASE

MAT'L.
FINISH 3 of 4

DRAWN MDU 02/20/07
CHK
APPD DS 02/20/07
SCALE 1=1
REF
FMF
PREV

52A105383AA

EITHER ROTATION, DUAL VOLTAGE, TYPE KC OR KH, WITH THERMAL PROTECTION



NOTE #1 - START CAP & J9 WHEN SPECIFIED (*). IF NO CAPACITOR (KH), CONNECT T5 DIRECTLY TO SWITCH (A). WHEN MORE THAN ONE CAPACITOR IS USED, CONNECT IN PARALLEL.

NOTE #2 - TO REVERSE ROTATION, INTER CHANGE RD(T8) AND BLK(J9-KC OR T5-KH) LEADS.

SWITCH REF. - 115D958AB

CONNECTION LABEL

CCW ROTATION: NP52X332051AA

CW ROTATION: NP52X332051AC

NO.	REVISION	BY & DATE	CHK	ANG	TOLERANCES UNLESS SPECIFIED		FINISH	TITLE	DRAWN M.D.P 06/29/87
					DEC.	INCHES			
					.X	±0.1			CHK
					.XX	±0.02			APPD M.D.P 03/26/96
5	ADDED CONNECTION LABEL PER ECO-0030779	UD 02/06/13	PKG	.XXX	±0.005			CONNECTION DIAGRAM 30 FRAME SWITCH REDESIGN	SCALE 1=1
4	UPDATED PER ISO7-0150	MD 01/23/07		.XXXX	±0.0005				REF
									FMF
									PREV



REGAL-BELOIT CORPORATION

TITLE CONNECTION DIAGRAM
30 FRAME SWITCH REDESIGN

MAT'L.
FINISH 4 of 4