

PRODUCT INFORMATION PACKET

Modal No: 5KH33HN5725X
Catalog No: 4702
1/4,1725,OPEN,48Y,1/60/115/230
Fan and Blower



Regal and Marathon are trademarks of Regal Beloit Corporation or one of its affiliated companies.
©2017 Regal Beloit Corporation, All Rights Reserved. MC017097E

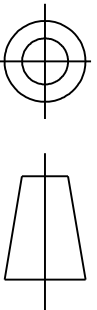


Nameplate Specifications

Output HP	0.25 Hp	Output KW	0.19 kW
Frequency	60 Hz	Voltage	115/230 V
Current	5.2,2.6 A	Speed	1725 rpm
Service Factor	1.35	Phases	1
Efficiency	57.5 %	Duty	CONT
Insulation Class	B	KVA Code	S
Frame	48Y	Enclosure	OPEN
Overload Protector	AUTO	Ambient Temperature	40 °C
Drive End Bearing Size	6203	Opp Drive End Bearing Size	6203
UL	Recognized	CSA	Yes
CE	N		

Technical Specifications

Electrical Type	Split Phase	Starting Method	SM
Poles	4	Rotation	CW/CCW
Mounting	RB	Motor Orientation	ANY
Drive End Bearing	BALL	Opp Drive End Bearing	BALL
Frame Material	Rolled Steel	Overall Length	9.1 in
Frame Length	5.41 in	Shaft Diameter	0.5 in
Shaft Extension	1.5 in	Thru-bolts Extension	0

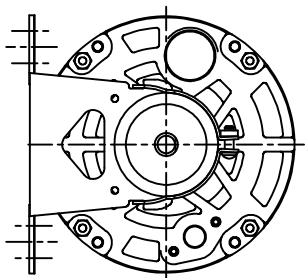
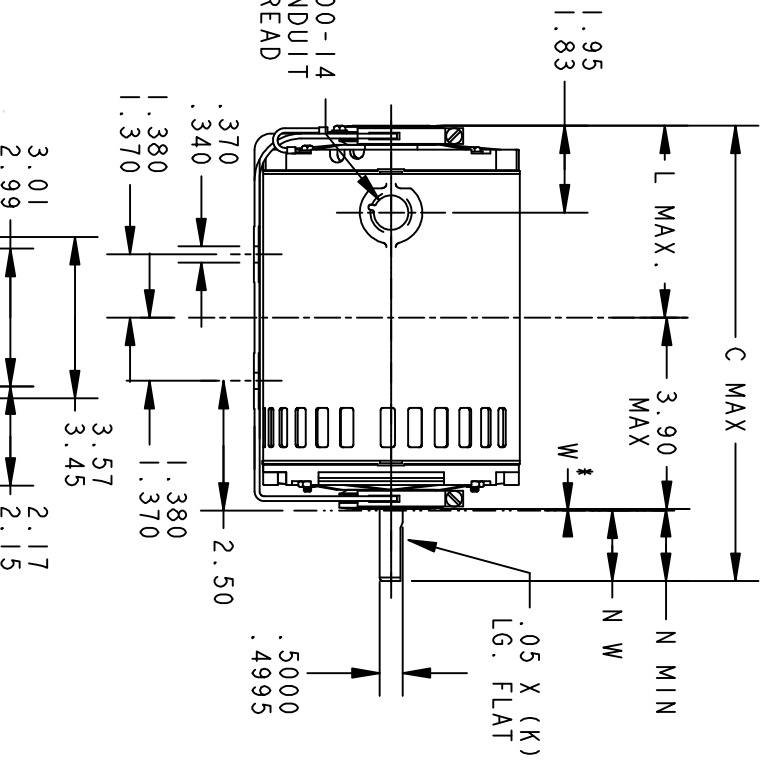
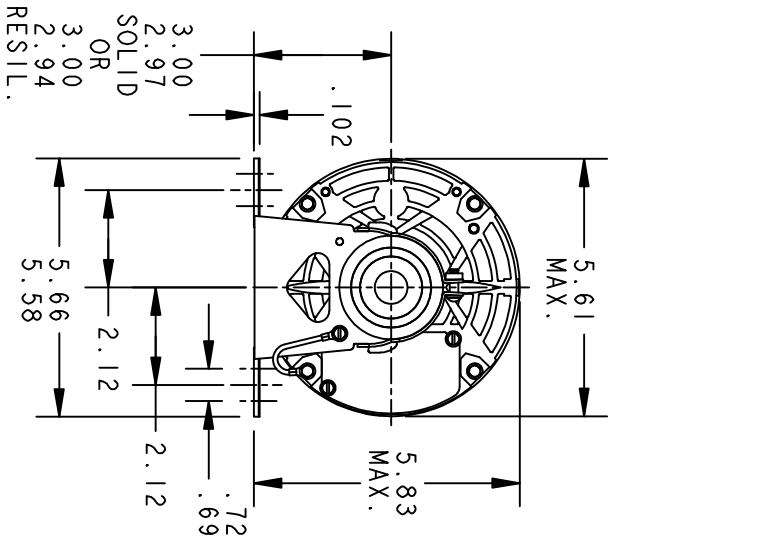


THIRD ANGLE PROJECTION

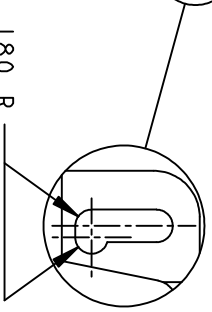
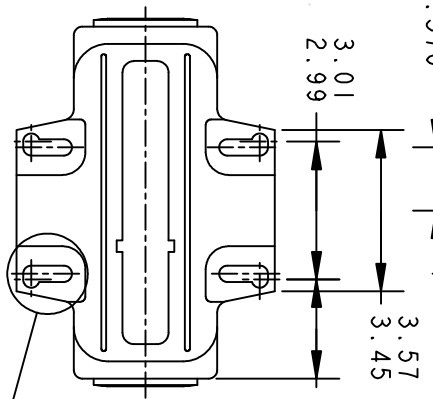
REVISIONS		DATE	APPROVED
REV.	DESCRIPTION		
01	33 WAS 32 AS PER IS10-2231	10/01/10	PN

52A113086 1

SIZE A DRAWING NO.



VIEW SHOWING P.E. VENTILATION OPENINGS



* IS A CLEARANCE DUE TO VARIATION IN PARTS AND ASSEMBLY.

2	K KH	33	48Y	9.10	1.16	3.84	1.50	1.63/1.41
1	K KH	36	48Y	9.91	1.16	4.65	1.50	1.63/1.41
P	TYPE	GE SIZE	NEMA FR	C	K	L	N	N-W

SIGNATURES		DATE
MODEL	PN	08/28/10
DETAIL		
CHECKED		
ENGRG		
MFG		
QUALITY		
ISSUED	VENKAT	08/28/10

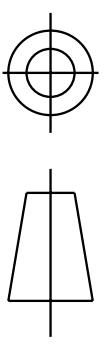
REGAL-BELOIT CORPORATION

OUTLINE

FORM N - GENERAL PURPOSE MOTOR - DRIP PROOF - RESIL. BASE
-BALL OR SLEEVE BEARING - SPECIAL MOUNTING HOLES IN BASE

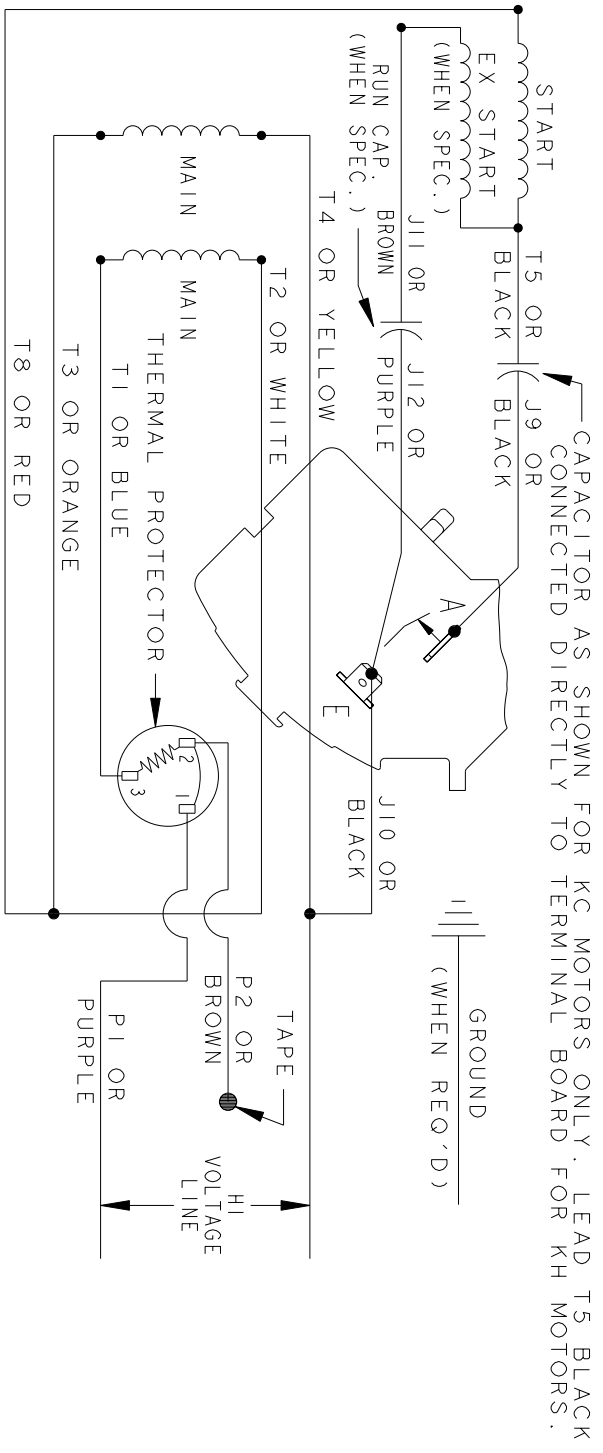
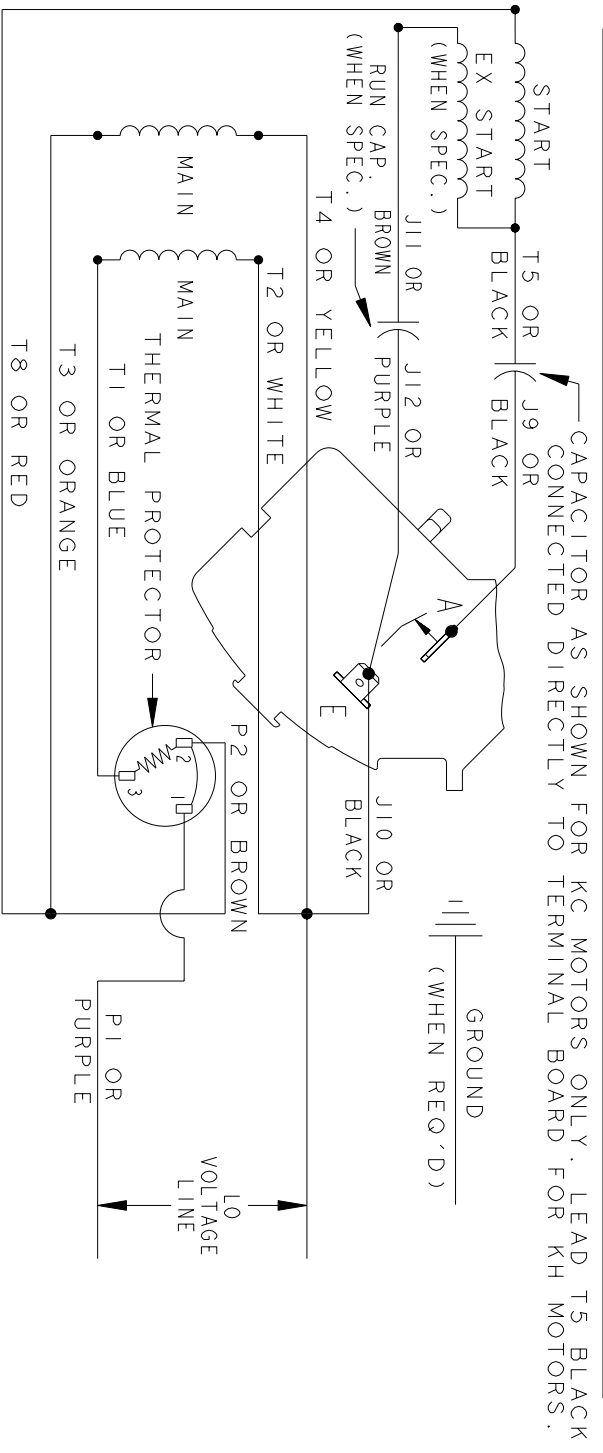
FOR ADDITIONAL INFO REFER TO:	
APPLIED PRACTICES	
DIMENSIONS ARE IN INCHES	
MATERIAL	SOLID MODEL: 52A113086

SIZE A	SCALE: 0.250	REF. No.:	
SIZE DRAWING			
52A113086			
REV 1			SHEET 1 of 1



REV.	DESCRIPTION	DATE	APPROVED
7	UPDATED FORMAT	01/05/06	MAM

CCW/CW ROTATION - DUAL VOLTAGE
TYPE KC, KH OR KCR - WITH THERMAL PROTECTOR



NOTE#1 - TO REVERSE ROTATION, INTERCHANGE T8 RED AND J10 BLACK LEADS.
NOTE#2 - WHEN MORE THAN ONE CAPACITOR IS USED, CONNECT IN PARALLEL.
NOTE#3 - 115D958ABP5 - HIGH CURRENT CONTACTS.

SWITCH (C) - 115D958ABP5, SWITCH (H) - 115D958AA (USE 115D958DA FOR EP)

REF. DIAG. - 113A327, 119A9352 & 52A102102 CONNECTION LABEL - 52X332912

SIGNATURES		DATE	TITLE		
MODEL	M.D.P.	06/29/87	<p>REGAL-BELOLT CORPORATION</p> <p>CONNECTION DIAGRAM</p>		
DETAIL					
CHECKED					
ENGRG					
FOR ADDITIONAL INFO REFER TO:		MFG	<p>FME: 30 FRAME SWITCH REDESIGN</p> <p>SIZE DRAWING 52A105383BA</p>		
APPLIED PRACTICES	QUALITY				
DIMENSIONS ARE IN INCHES	ISSUED	M.D.P. 12/11/97			
MATERIAL	SOLID MODEL: 52A105383BA		SCALE: 1.000	REF. No.:	SHEET 1 of 1