

PRODUCT INFORMATION PACKET

Modal No: 5KH37PN41X
Catalog No: H159
1/6,1140,DP,48Z,1/60/115
Fan and Blower



Regal and Marathon are trademarks of Regal Beloit Corporation or one of its affiliated companies.
©2017 Regal Beloit Corporation, All Rights Reserved. MC017097E

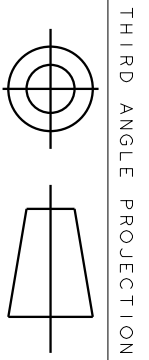


Nameplate Specifications

Output HP	0.17 Hp	Output KW	0.13 kW
Frequency	60 Hz	Voltage	115 V
Current	4 A	Speed	1140 rpm
Service Factor	1.35	Phases	1
Efficiency	50.5 %	Duty	CONT
Insulation Class	A	KVA Code	P
Frame	48Z	Enclosure	DP
Overload Protector	AUTO	Ambient Temperature	40 °C
Drive End Bearing Size	6203	Opp Drive End Bearing Size	6203
UL	Recognized	CSA	Yes
CE	N		

Technical Specifications

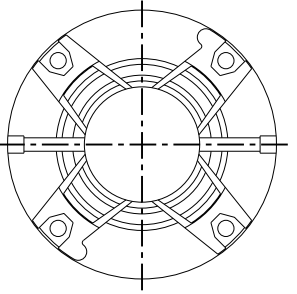
Electrical Type	Split Phase	Starting Method	SM
Poles	6	Rotation	CCW/CW
Mounting	RB	Motor Orientation	ANY
Drive End Bearing	BALL	Opp Drive End Bearing	BALL
Frame Material	Rolled Steel	Overall Length	10.8 in
Frame Length	6.62 in	Shaft Diameter	0.5 in
Shaft Extension	1.88 in	Thru-bolts Extension	0



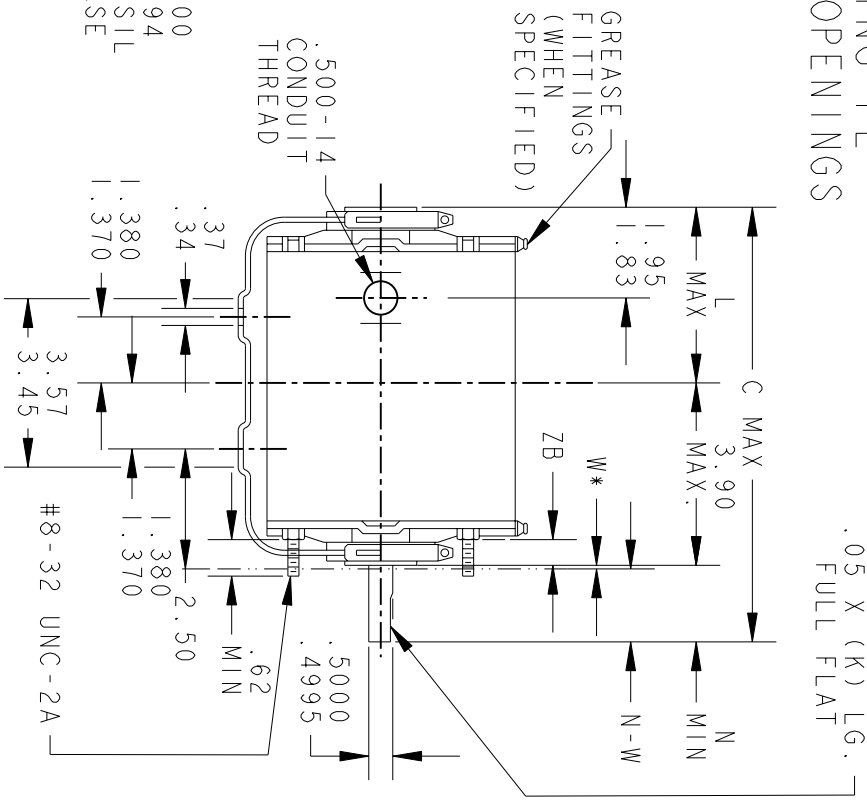
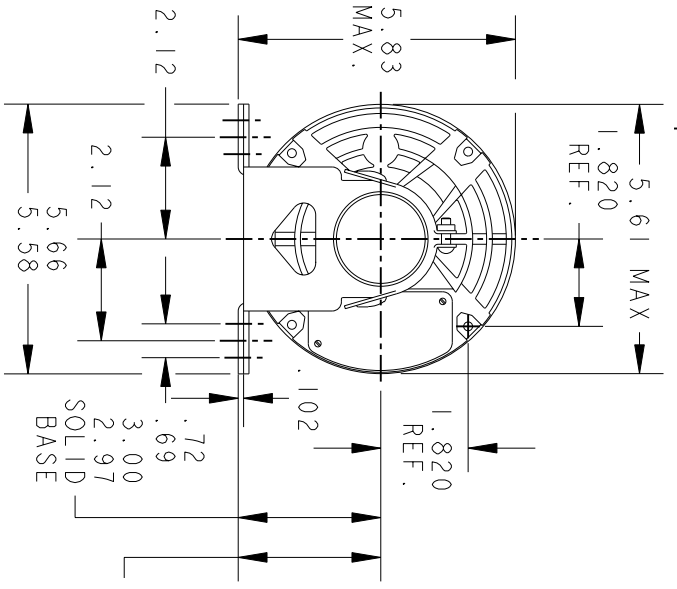
THIRD ANGLE PROJECTION

REVISIONS

REV.	DESCRIPTION	DATE	APPROVED
8	CHG TO RBC FORMAT PER IS 05-1777	12/15/05	RAJKUMAR



VIEW SHOWING PE VENTILATION OPENINGS



*W IS A CLEARANCE DUE TO VARIATION IN PARTS & ASSEMBLY.

PT	TYPE	GE SIZE	NEMA FR	C	K	L	N	N-W	ZB
6	KH	37	48Z	10.78	1.54	5.05	1.88	2.01/1.79	.55/.52
5	KH	36	48Z	10.38	1.54	4.65	1.88	2.01/1.79	.55/.52
4	KH	33	48Z	9.94	1.91	3.84	2.25	2.38/2.16	.55/.52
3	KH	35	48Z	9.95	1.54	4.22	1.88	2.01/1.79	.55/.52
2	KH	33	48Z	9.57	1.54	3.84	1.88	2.01/1.79	.55/.52
1	KH	32	48Z	9.32	1.54	3.59	1.88	2.01/1.79	.55/.52



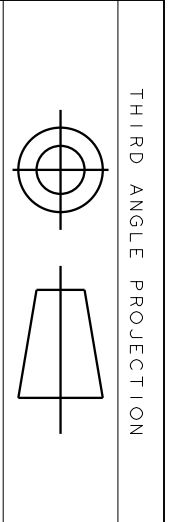
REGAL-BELOTT CORPORATION

TITLE OUTLINE

FORM N- GENERAL PURPOSE MOTOR- DRIP PROOF- SOLID OR RESIL BASE- BALL OR SLEEVE BEARING

FOR ADDITIONAL INFO REFER TO:	MFG	
APPLIED PRACTICES	QUALITY	
DIMENSIONS ARE IN INCHES	ISSUED	MDP 07/10/96
MATERIAL	SOLID MODEL:	52A101908

SCALE: 0.250	REF. No.:	
SIZE: DRAWING A		
52A101908	REV 8	



REV.	DESCRIPTION	DATE	APPROVED
6	UPDATED FORMAT	12/01/05	MAM

EITHER ROTATION-SINGLE VOLTAGE-TYPE KC OR KH-WITH THERMAL PROTECTOR



NOTE #1 - TO REVERSE ROTATION INTERCHANGE RED (T8) AND BLACK (J9-KC OR T5-KH) LEADS.
 NOTE #2 - WHEN MORE THAN ONE CAPACITOR IS USED CONNECT IN PARALLEL.

SWITCH (C) - 115D958AB REF. DIAG. - 121A851 CONN. LABEL - 52X332048

SIGNATURES	DATE
MODEL M.D.PAPE	06/29/87
DETAIL	
CHECKED	
ENGRG	
MFG	
QUALITY	
ISSUED	M.D.P. 03/08/00
SOLID MODEL: 52A105379AA	

REGAL-BELOIT CORPORATION

REGAL-BELOIT

CONNECTION DIAGRAM

FMF - 30 FR SWITCH REDESIGN

SCALE: 1.000 REF. No.:

52A105379AA

REV 6

SHEET 1 of 1