

PRODUCT INFORMATION PACKET

Modal No: 5KH39EN2506X
Catalog No: H440
1/3,3450,DP,56J,1/60/115
Jet Pump



Regal and Marathon are trademarks of Regal Beloit Corporation or one of its affiliated companies.
©2017 Regal Beloit Corporation, All Rights Reserved. MC017097E



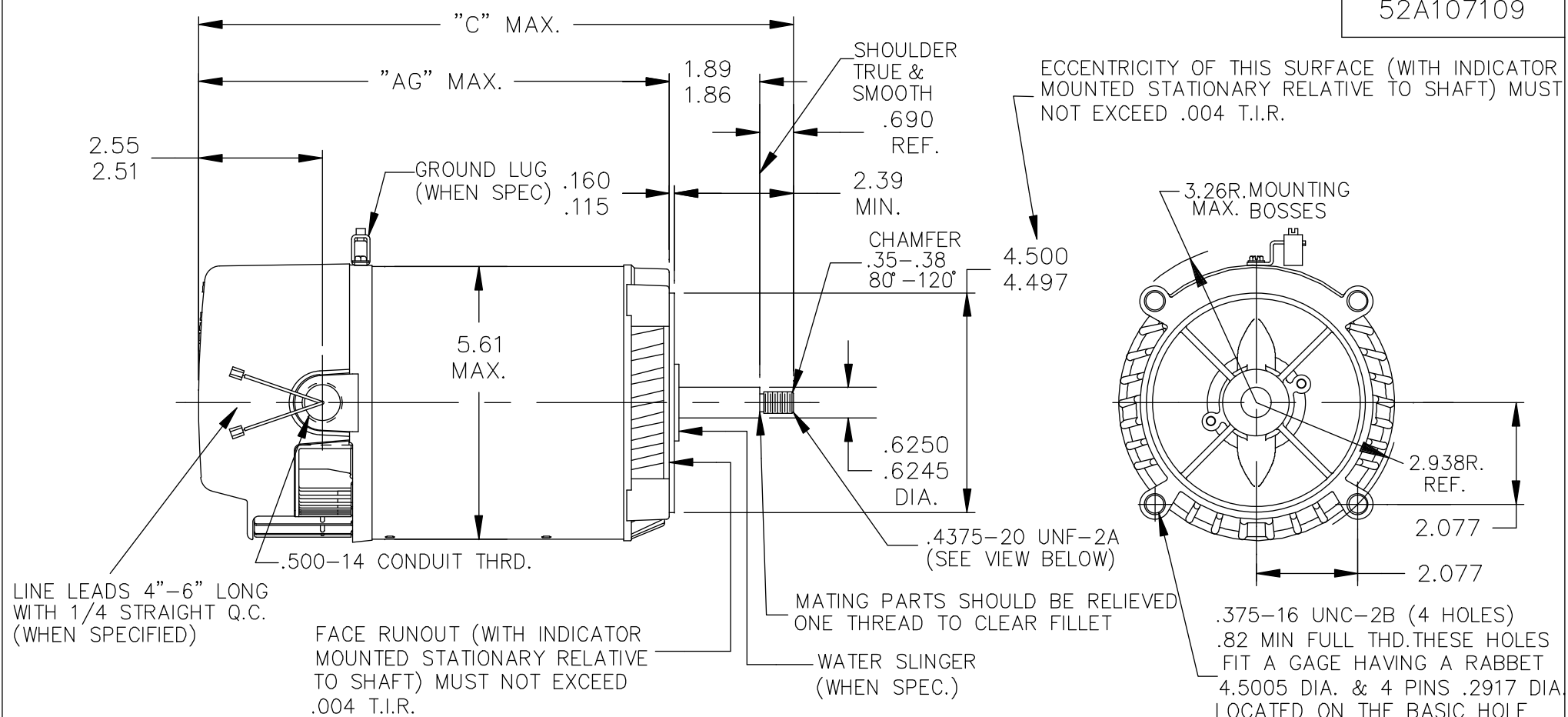
Nameplate Specifications

Output HP	0.33 Hp	Output KW	0.25 kW
Frequency	60 Hz	Voltage	115 V
Current	6.2 A	Speed	3450 rpm
Service Factor	1.75	Phases	1
Efficiency	54.5 %	Duty	CONT
Insulation Class	B	KVA Code	S
Frame	56J	Enclosure	DP
Overload Protector	AUTO	Ambient Temperature	50 °C
Drive End Bearing Size	6203	Opp Drive End Bearing Size	6203
UL	Recognized	CSA	Yes
CE	N		

Technical Specifications

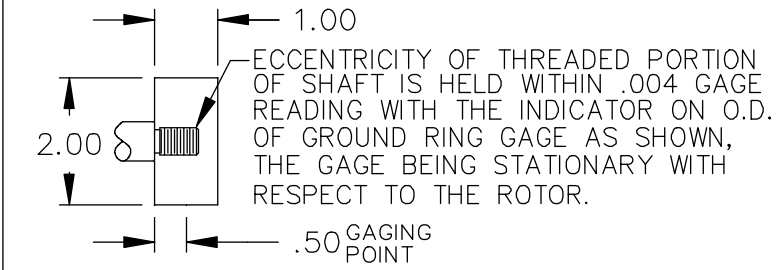
Electrical Type	Split Phase	Starting Method	SM
Poles	2	Rotation	CW
Mounting	RD	Motor Orientation	ANY
Drive End Bearing	LOCKED	Opp Drive End Bearing	BALL
Frame Material	Rolled Steel	Overall Length	11.54 in
Frame Length	4.43 in	Shaft Diameter	0.63 in
Shaft Extension	2.39 in		

52A107109




LINE LEADS 4"-6" LONG WITH 1/4 STRAIGHT Q.C. (WHEN SPECIFIED)

FACE RUNOUT (WITH INDICATOR MOUNTED STATIONARY RELATIVE TO SHAFT) MUST NOT EXCEED .004 T.I.R.



5	KC	32	56J	12.27	9.64		5.16
4	KC	39	56J	15.61	12.98		8.50
3	KC	39	56J	13.98	11.35		6.87
2	KC	33	56J	12.52	9.89		5.41
1	KC,KH	39	56J	11.54	8.91		4.43
P	TYPE	GE SIZE	NEMA FR	C	AG		SHELL REF.

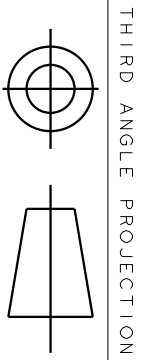
NO.	REVISION	BY & DATE	CHK	ANG	TOLERANCES UNLESS SPECIFIED	
					DEC.	INCHES
					.X	±.1
11	JET/POOL IS REPLACED BY JET PUMP PER ECO-0033464	PVR 05/15/13	DS	.XX	±.03	
10	CHG TO RBC FORMAT PER ISO5-1777	AB 02/17/06		.XXX	±.005	
9	ADDED PART #5	UJM 07/16/01		.XXXX	±.0005	
					±1/2"	


REGAL-BELOIT CORPORATION

TITLE **OUTLINE**
2 COMPARTMENT UPGRADE - 56J - JET PUMP

MAT'L. **3 of 4**
 FINISH

DRAWN MAM 02/09/91
 CHK
 APPD MAM 06/05/91
 SCALE 3=8
 REF
 FMF
 PREV



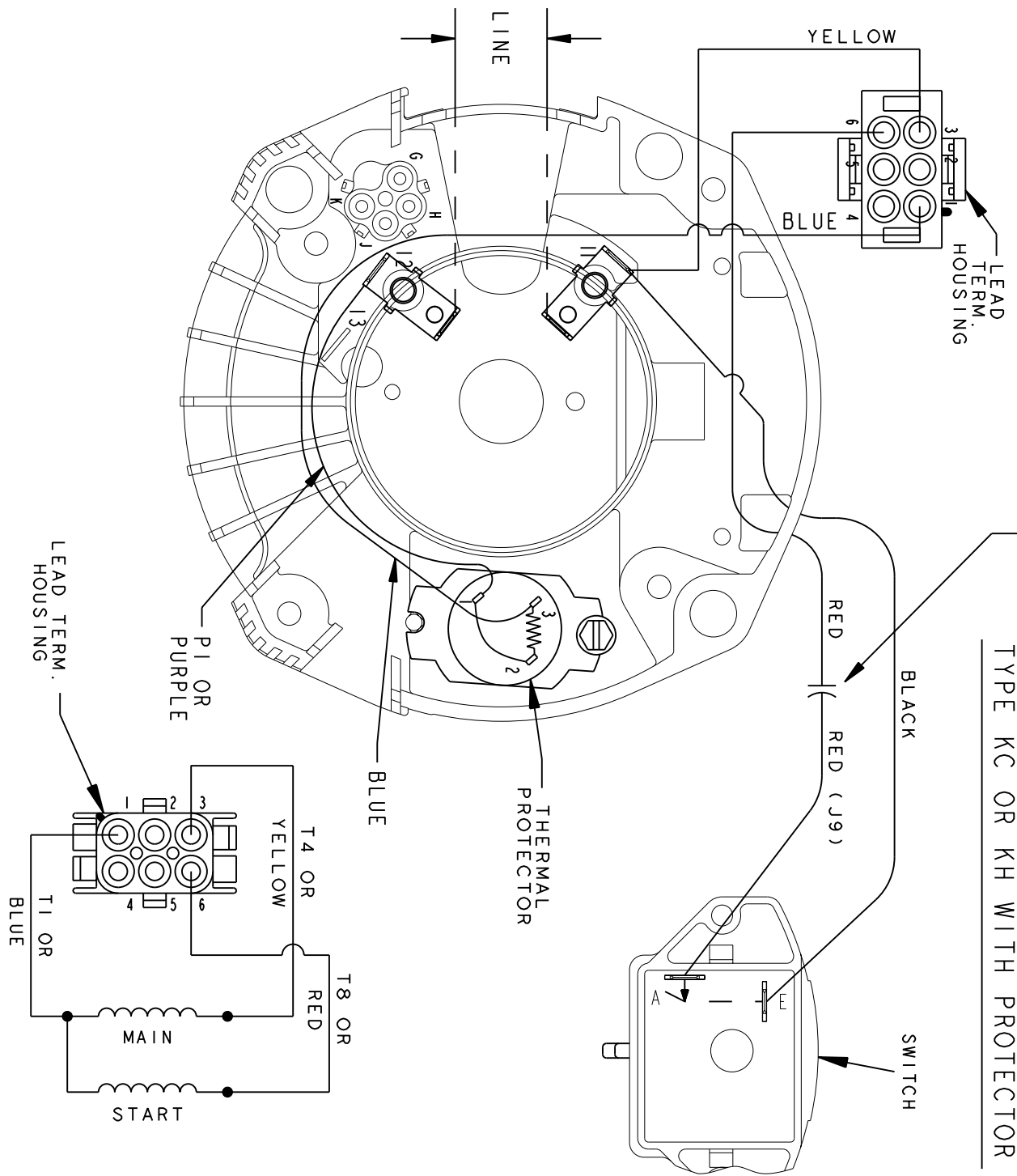
THIRD ANGLE PROJECTION

REVISIONS

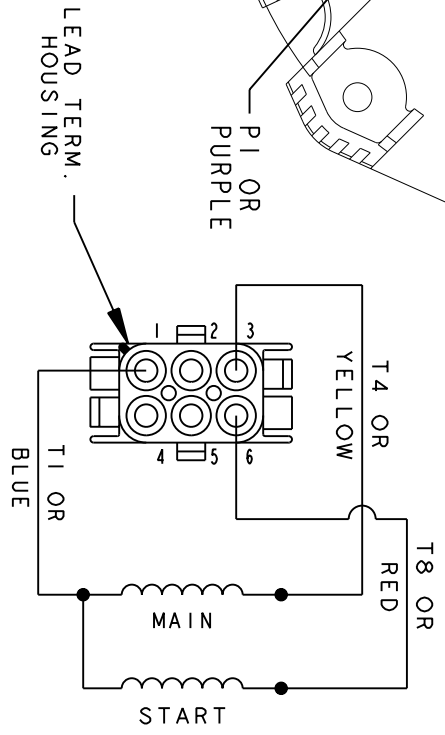
REV.	DESCRIPTION	DATE	APPROVED
1	UPDATED TO RBC FORMAT	01/11/06	MAM

START CAPACITOR FOR KC MOTORS
ONLY CONNECT RED LEAD DIRECTLY
TO SWITCH FOR KC MOTORS

SET ROTATION - SINGLE VOLTAGE
TYPE KC OR KH WITH PROTECTOR



CONNECTION LABEL - 52X333028



SIGNATURES		DATE
MODEL	B.L.J.	07/22/92
DETAIL	.	.
CHECKED	.	.
ENGRG	.	.
MFG	.	.
QUALITY	.	.
ISSUED	B.L.J.	07/22/92
SOLID MODEL:	52A106891	

REGAL-BELOIT CORPORATION

REGAL-BELOIT

CONNECTION DIAGRAM

FMF: 2 COMPARTMENT SINGLE VOLT, SET ROTATION

SIZE DRAWING A

SCALE: 1.000 REF. No: .

52A106891

REV 1

SHEET 1 of 1