

# PRODUCT INFORMATION PACKET

Modal No: 5KH39QN9548  
Catalog No: 4322  
1/6-1/18,1725/1140,DP,48,1/60/115  
Fan and Blower



Regal and Marathon are trademarks of Regal Beloit Corporation or one of its affiliated companies.  
©2017 Regal Beloit Corporation, All Rights Reserved. MC017097E



## Nameplate Specifications

Output HP	<b>0.17,0.06 Hp</b>	Output KW	<b>0.13 kW</b>
Frequency	<b>60 Hz</b>	Voltage	<b>115 V</b>
Current	<b>3.4,1.9 A</b>	Speed	<b>1725,1140 rpm</b>
Service Factor	<b>1.35</b>	Phases	<b>1</b>
Efficiency	<b>50.5 %</b>	Duty	<b>CONT</b>
Insulation Class	<b>B</b>	KVA Code	<b>R</b>
Frame	<b>48</b>	Enclosure	<b>DP</b>
Overload Protector	<b>N/R</b>	Ambient Temperature	<b>40 °C</b>
Drive End Bearing Size	<b>6203</b>	Opp Drive End Bearing Size	<b>6203</b>
UL	<b>Recognized</b>	CSA	<b>Yes</b>
CE	<b>N</b>		

## Technical Specifications

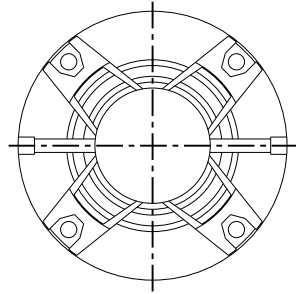
Electrical Type	<b>Split Phase</b>	Starting Method	<b>SM</b>
Poles	<b>4</b>	Rotation	<b>CCW/CW</b>
Mounting	<b>RB</b>	Motor Orientation	<b>ANY</b>
Drive End Bearing	<b>BALL</b>	Opp Drive End Bearing	<b>BALL</b>
Frame Material	<b>Rolled Steel</b>	Overall Length	<b>10 in</b>
Frame Length	<b>6.22 in</b>	Shaft Diameter	<b>0.5 in</b>
Shaft Extension	<b>1.5 in</b>	Thru-bolts Extension	<b>0</b>

THIRD ANGLE PROJECTION

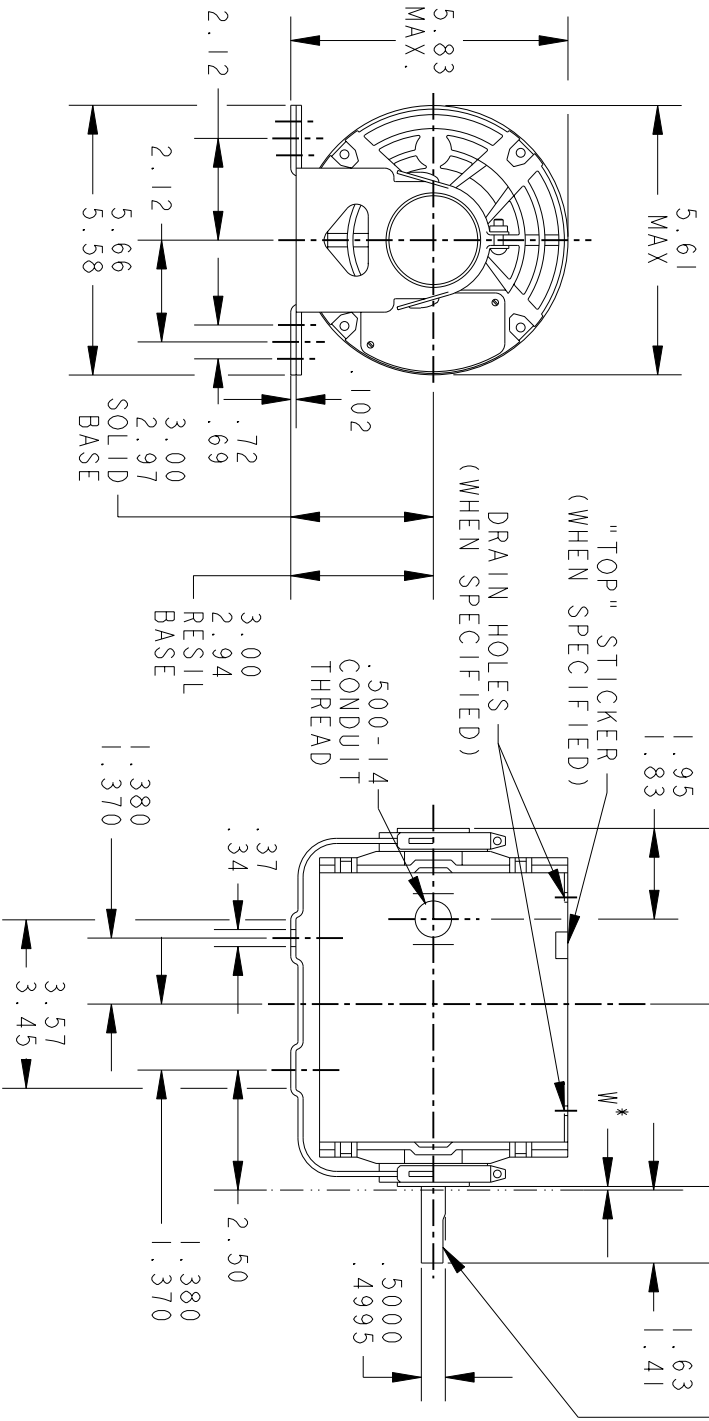


REVISIONS

REV.	DESCRIPTION	DATE	APPROVED
7	REDRAWN NO CHANGE T196-22390	07/10/96	MDP
8	CHG TO RBC FORMAT PER IS 05-1777	15/12/05	GOVARDAN



VIEW SHOWING PE VENTILATION OPENINGS



FOR ADDITIONAL INFO REFER TO:  
 APPLIED PRACTICES  
 DIMENSIONS ARE IN INCHES ✓  
 MATERIAL

PT	TYPE	GE SIZE	NEMA FR	C	L	PT	TYPE	GE SIZE	NEMA FR	C	L
3	KH	33	48	9.19	3.84	6	KH	38	48	11.00	5.65
2	KH	32	48	8.94	3.59	5	KH	37	48	10.40	5.05
1	KH	35	48	9.57	4.22	4	KH	36	48	10.00	4.65

\* W IS A CLEARANCE DUE TO VARIATION IN PARTS & ASSEMBLY.

SIGNATURES	DATE
MODEL GLB	11/14/74
DETAIL	
CHECKED	
ENGRG	
MFG	
QUALITY	
ISSUED	MDP 07/10/96
SOLID MODEL: 52A101440	



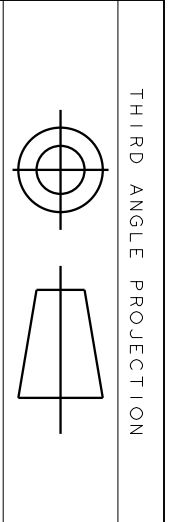
REGAL-BELOTT CORPORATION

OUTLINE

TITLE  
 FORM G - GENERAL PURPOSE MOTOR - DRIP PROOF -  
 SOLID OR RESIL BASE - BALL OR SLEEVE BEARING

SIZE DRAWING A  
 SCALE: 1.000 REF. No.:  
 52A101440 REV 8

SHEET 1 of 1



REV.	DESCRIPTION	DATE	APPROVED
5	UPDATED TO RBC FORMAT	01/09/06	MAM

EITHER ROTATION  
 SINGLE VOLTAGE  
 TYPE KC, KCR, OR KH  
 2 SPEED  
 POLE CHANGING

T1 OR BLUE

T2 OR WHITE

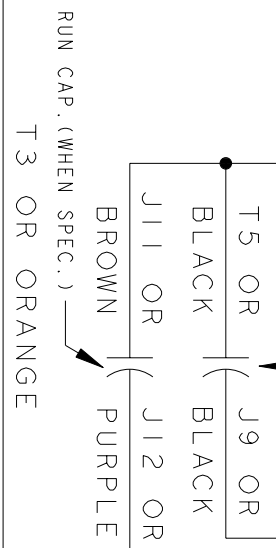
T8 OR RED

MAIN (HI)

MAIN (LO)

START

START CAPACITOR  
 FOR KC MOTORS  
 ONLY, LEAD T5 OR  
 BLACK, CONNECTED  
 DIRECTLY TO  
 SWITCH FOR KH  
 MOTORS



BLACK JUMPER LEAD

NOTE #1 - TO REVERSE ROTATION INTERCHANGE BLUE (T1) AND WHITE (T2) LEADS.  
 NOTE #2 - WHEN MORE THAN ONE CAPACITOR IS USED CONNECT IN PARALLEL.

SWITCH (D) - 115D9558BA

CONNECTION LABEL - 52X332073

REF. DIAG. - 121A865

SIGNATURES	DATE
MODEL M.D.P.	12/14/87
DETAIL	
CHECKED	
ENGRG	
MFG	
QUALITY	
ISSUED M.D.P.	12/14/87
APPLIED PRACTICES	
DIMENSIONS ARE IN INCHES	
MATERIAL	SOLID MODEL: 52A106478AA



REGAL-BELOIT CORPORATION

REGAL-BELOIT CONNECTION DIAGRAM

FMF: 5KH36KN114G

52A106478AA

REV 5

SCALE: 1.000

REF. No.:

SHEET 1 of 1