

PRODUCT INFORMATION PACKET

marathon[®]
Motors

Modal No: 5KH39QN9550X
Catalog No: 4412
1/4-1/12,1725/1140,DP,48,1/60/230
Fan and Blower



Regal and Marathon are trademarks of Regal Beloit Corporation or one of its affiliated companies.

©2017 Regal Beloit Corporation, All Rights Reserved. MC017097E

REGAL

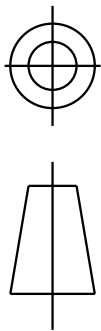
Nameplate Specifications

Output HP	0.25,0.08 Hp	Output KW	0.19 kW
Frequency	60 Hz	Voltage	230 V
Current	2.1,1.3 A	Speed	1725,1140 rpm
Service Factor	1.35	Phases	1
Efficiency	55 %	Duty	CONT
Insulation Class	B	KVA Code	S
Frame	48	Enclosure	DP
Overload Protector	AUTO	Ambient Temperature	40 °C
Drive End Bearing Size	6203	Opp Drive End Bearing Size	6203
UL	Recognized	CSA	Yes
CE	N		

Technical Specifications

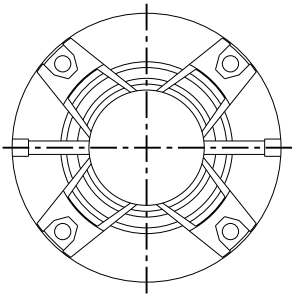
Electrical Type	Split Phase	Starting Method	SM
Poles	4	Rotation	CCW/CW
Mounting	RB	Motor Orientation	ANY
Drive End Bearing	BALL	Opp Drive End Bearing	BALL
Frame Material	Rolled Steel	Overall Length	10.4 in
Frame Length	6.62 in	Shaft Diameter	0.5 in
Shaft Extension	1.5 in	Thru-bolts Extension	0

THIRD ANGLE PROJECTION

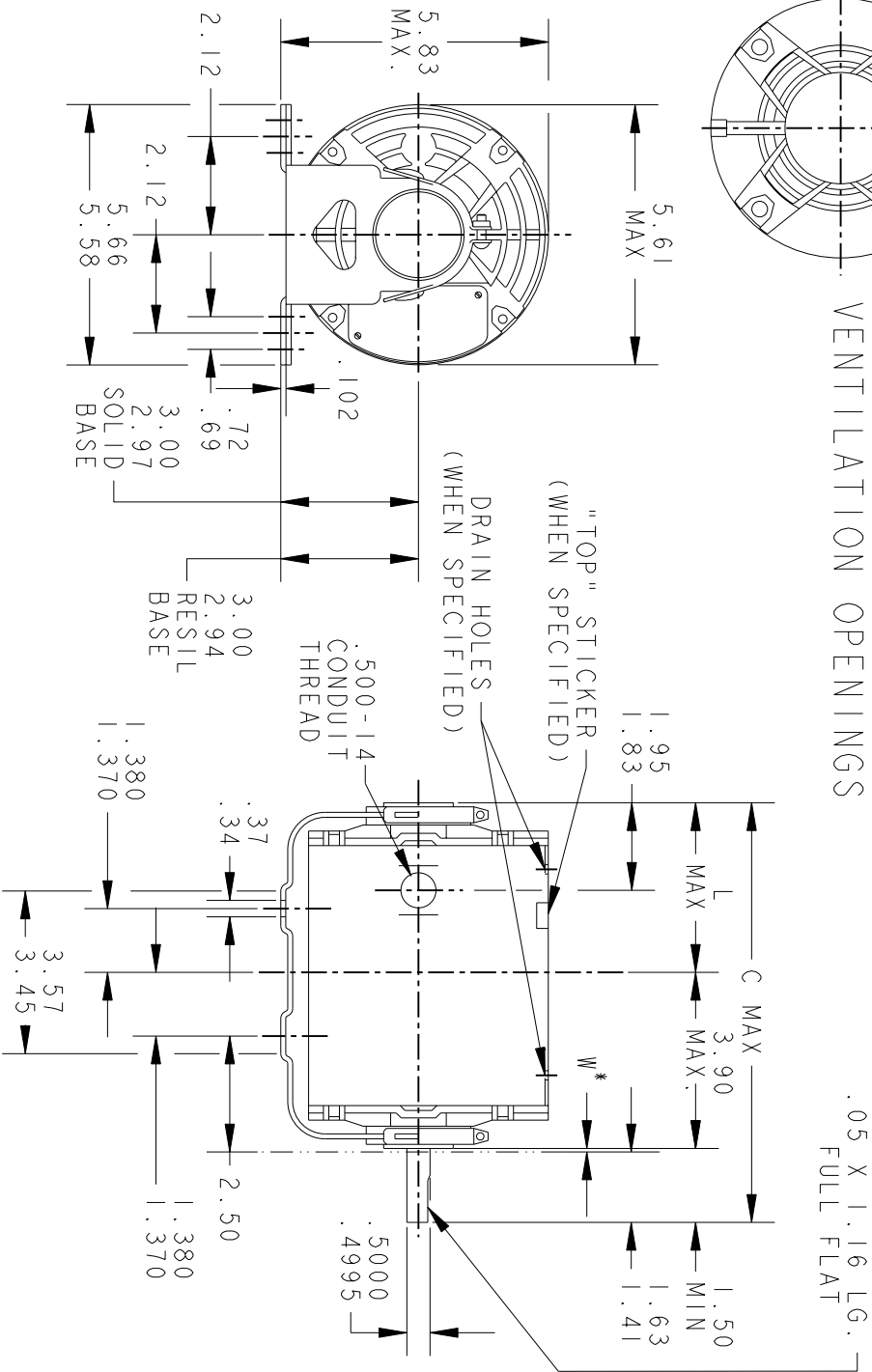


REVISIONS

REV.	DESCRIPTION	DATE	APPROVED
7	REDRAWN NO CHANGE T196-22390	07/10/96	MDP
8	CHG TO RBC FORMAT PER IS 05-1777	15/12/05	GOVARDAN



VIEW SHOWING PE
VENTILATION OPENINGS



*W IS A CLEARANCE DUE TO VARIATION IN PARTS & ASSEMBLY.

PT	TYPE	GE SIZE	NEMA FR	C	L	PT	TYPE	GE SIZE	NEMA FR	C	L
3	KH	33	48	9.19	3.84	6	KH	38	48	11.00	5.65
2	KH	32	48	8.94	3.59	5	KH	37	48	10.40	5.05
1	KH	35	48	9.57	4.22	4	KH	36	48	10.00	4.65

SIGNATURES

DATE



REGAL-BELOTT CORPORATION

OUTLINE

FORM G - GENERAL PURPOSE MOTOR - DRIP PROOF -
SOLID OR RESIL BASE - BALL OR SLEEVE BEARING

SIZE DRAWING
A

52A101440

REV
8

FOR ADDITIONAL INFO REFER TO:	QUALITY	MDP
APPLIED PRACTICES	ISSUED	07/10/96
DIMENSIONS ARE IN INCHES		

SCALE: 1.000

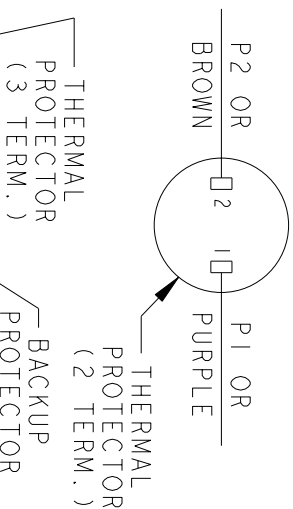
REF. No: .

SHEET 1 of 1

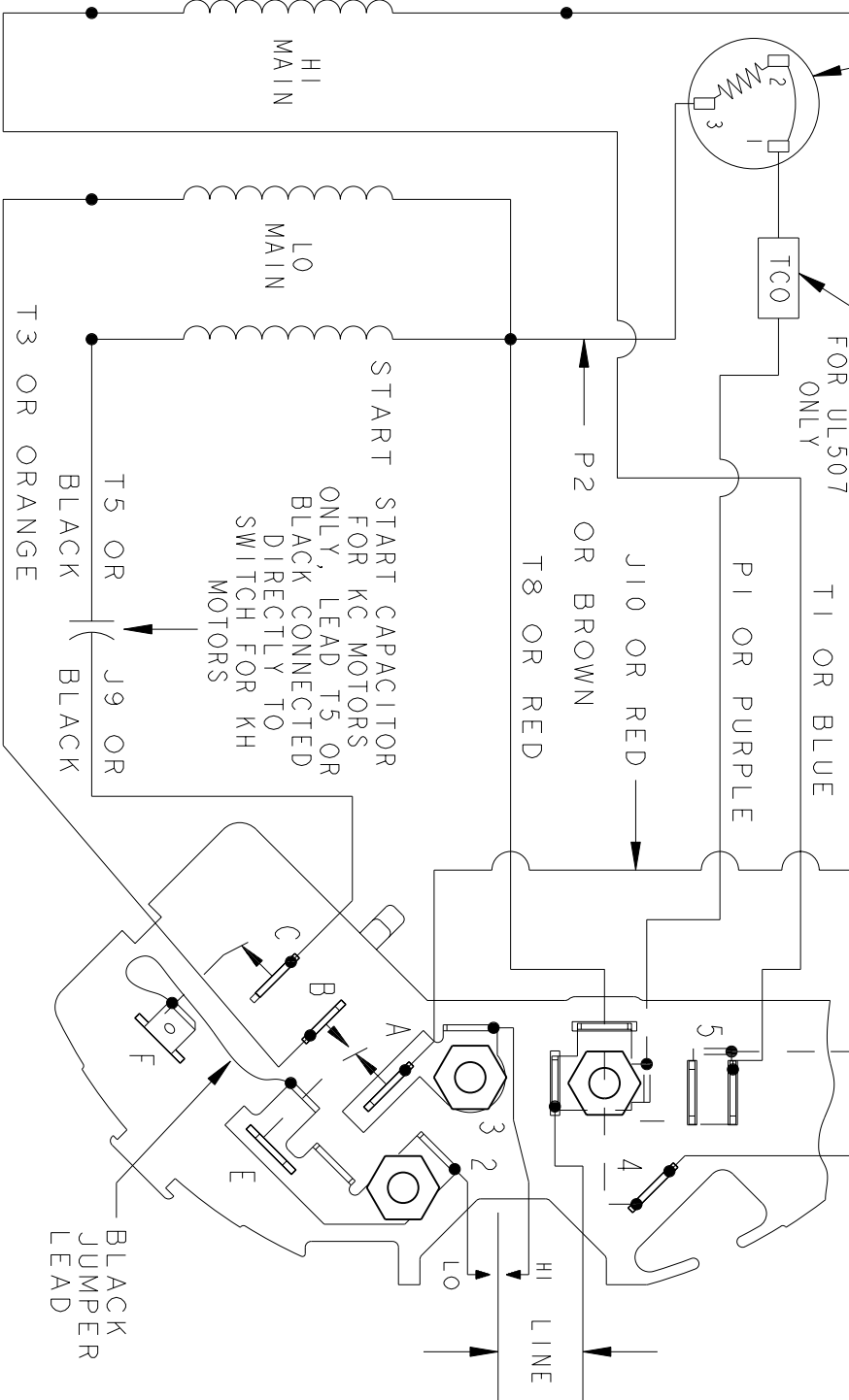
THIRD ANGLE PROJECTION		REVISIONS		
	REV.	DESCRIPTION	DATE	APPROVED
	4	UPDATED FORMAT	12/19/05	MAM

REV 4

P2 OR BROWN
P1 OR PURPLE



EITHER ROTATION
SINGLE VOLTAGE
TYPE KC WITH
THERMAL PROTECTOR
2 SPEED
POLE CHANGING
(HI SPEED START WINDING)
T2 OR WHITE



NOTE #1 - TO REVERSE ROTATION INTERCHANGE BLUE (T1) AND WHITE (T2) LEADS.

NOTE #2 - WHEN MORE THAN ONE CAPACITOR IS USED CONNECT IN PARALLEL.

SWITCH (D) - 115D958BA

REF. DIAG. - 121A866

CONNECTION LABEL - 52X332052

SIGNATURES		DATE
MODEL	M.D.PAPE	12/14/87
DETAIL	.	.
CHECKED	.	.
ENGRG	.	.
MF6	.	.
FOR ADDITIONAL INFO REFER TO:	QUALITY	.
APPLIED PRACTICES	ISSUED	M.D.P. 07/29/94
DIMENSIONS ARE IN INCHES	SOLID MODEL: 52A105385AC	

TITLE		SIZE	DRAWING	SCALE: 1.000	REF. No:	SHEET 1 of 1
REGAL-BELOTT CORPORATION		A	FMF:	5KH35KN14IG5	52A105385AC	REV 4
CONNECTION DIAGRAM						