

PRODUCT INFORMATION PACKET

marathon®
Motors

Modal No: 5KH39QNA039
Catalog No: 4390
1/2, 1725, DP, 56, 1/60/115
Fan and Blower



Regal and Marathon are trademarks of Regal Beloit Corporation or one of its affiliated companies.

©2017 Regal Beloit Corporation, All Rights Reserved. MC017097E

REGAL

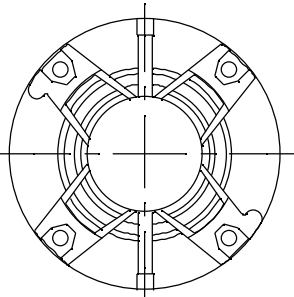
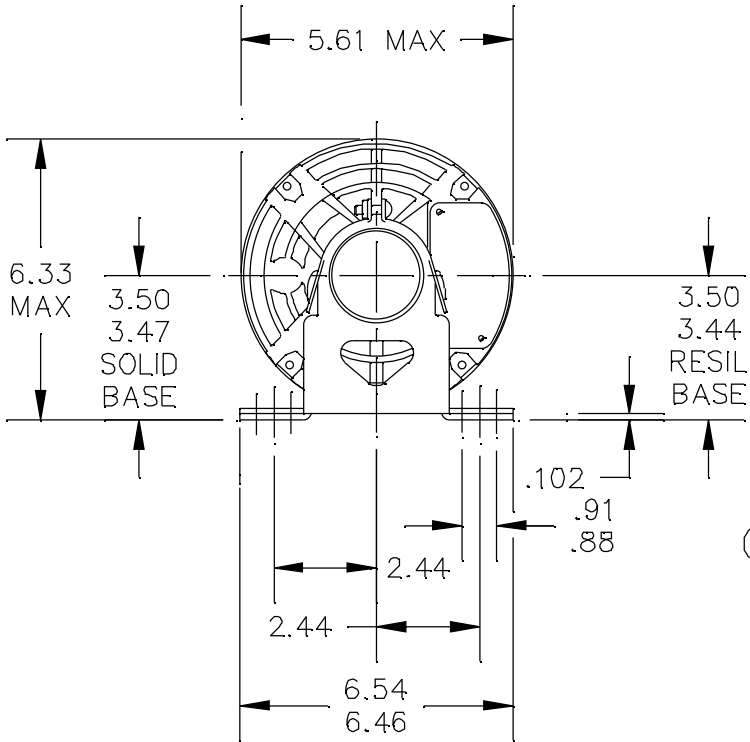
Nameplate Specifications

Output HP	0.5 Hp	Output KW	0.37 kW
Frequency	60 Hz	Voltage	115 V
Current	7.9 A	Speed	1725 rpm
Service Factor	1.25	Phases	1
Efficiency	65.4 %	Duty	CONT
Insulation Class	B	KVA Code	N
Frame	56	Enclosure	DP
Overload Protector	N/R	Ambient Temperature	40 °C
Drive End Bearing Size	6203	Opp Drive End Bearing Size	6203
UL	Recognized	CSA	Yes
CE	N		

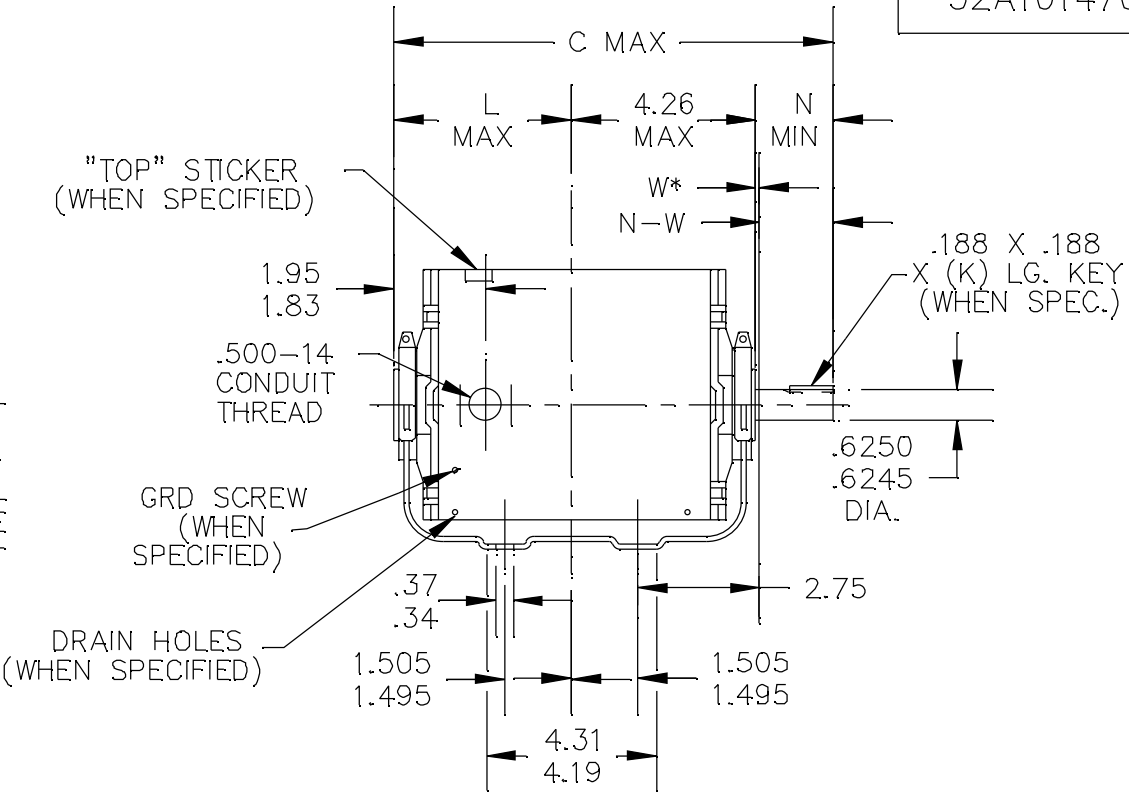
Technical Specifications

Electrical Type	Split Phase	Starting Method	SM
Poles	4	Rotation	CCW/CW
Mounting	RB	Motor Orientation	ANY
Drive End Bearing	BALL	Opp Drive End Bearing	BALL
Frame Material	Rolled Steel	Overall Length	10.32 in
Frame Length	6.22 in	Shaft Diameter	0.63 in
Shaft Extension	1.88 in	Thru-bolts Extension	0

52A101470



VIEW SHOWING
PE VENTILATION
OPENINGS



*W IS A CLEARANCE DUE TO VARIATION I N PARTS & ASSEMBLY.

6	KCP	38	56	9.51	3.42	1.88	2.01/1.79	1.38	
5	K-KH	39	56	11.85	5.76	1.88	2.01/1.79	1.38	7.75
4	K-KH	38	56	11.32	5.23	1.88	2.01/1.79	1.38	
3	K-KH	37	56	10.72	4.63	1.88	2.01/1.79	1.38	
2	K-KH	36	56	10.32	4.28	1.88	2.01/1.79	1.38	
1	K-KH	35	56	9.89	3.80	1.88	2.01/1.79	1.38	
PT	TYPE	RBC SIZE	NEMA FR	C	L	N	N-W	K	MIN. SHELL

TOLERANCES
UNLESS SPECIFIED

DEC.	INCHES
------	--------

 \bar{x}

$\frac{1}{2} \times \frac{1}{2}$	$\frac{1}{2} \times \frac{1}{2}$
$\frac{1}{2} \times \frac{1}{2}$	$\frac{1}{2} \times \frac{1}{2}$

3/3/3	1-1-1

.XXX	±0.005
------	--------

XXXX	±0.00
------	-------

ANG	+10
-----	-----



REGAL-BELOIT CORPORATION

TITLE

OUTLINE

DRIP PROOF- SOLID OR RESIL BASE

MATL

3 of 4

FINISH

DRAWN GLB 02/05/75

CHK

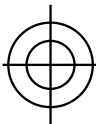
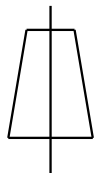
APPD MDP 07/10/96

SCALE 1=1

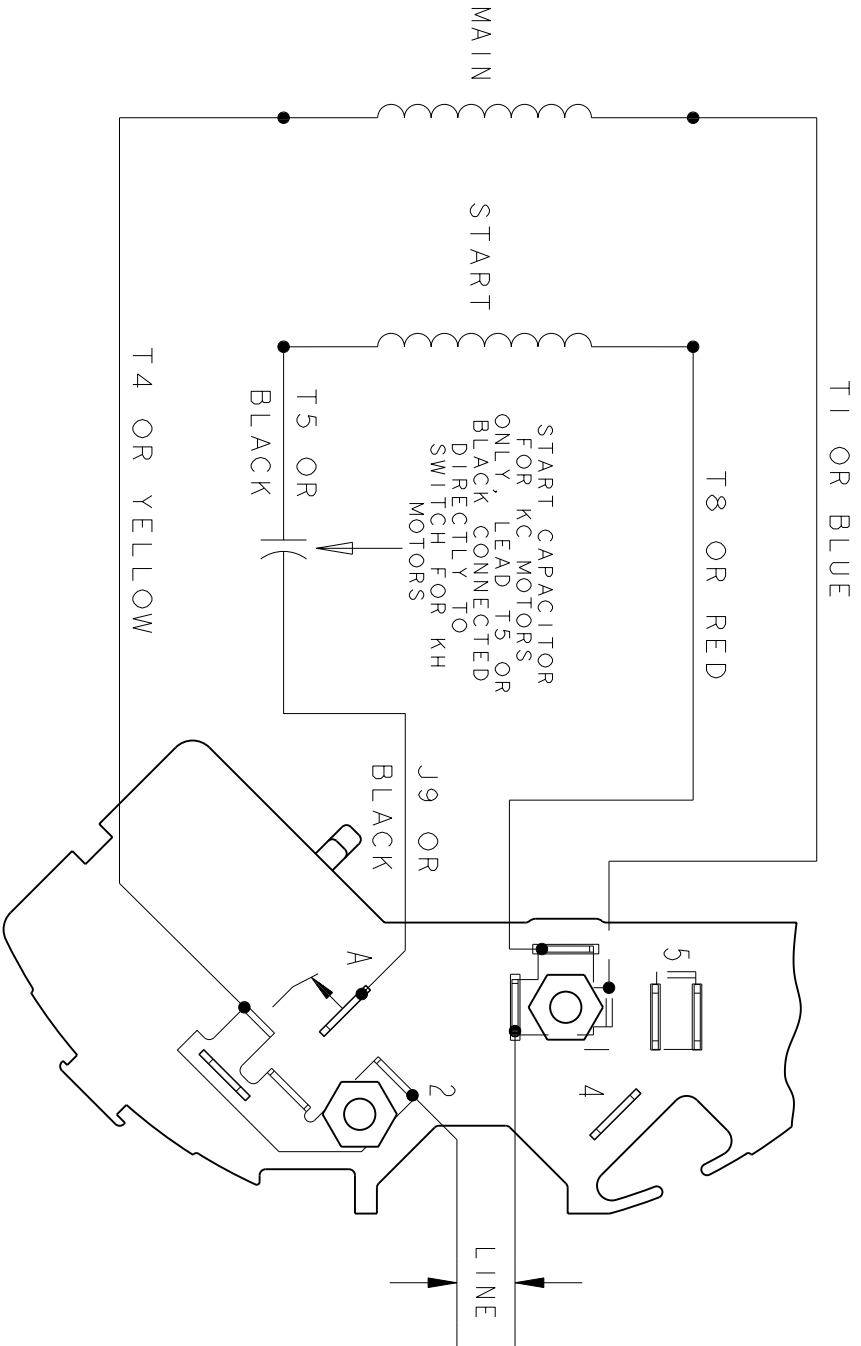
REF

FMF

PREV

THIRD ANGLE PROJECTION		REVISIONS			
		REV.	DESCRIPTION	DATE	APPROVED
		1	UPDATED FORMAT	11/10/05	MAM

EITHER ROTATION - SINGLE VOLTAGE
TYPE KC, OR KH



NOTE #1 - TO REVERSE ROTATION INTERCHANGE BLACK (T5-KH OR J9-KC) AND RED (T8) LEADS.

NOTE #2 - WHEN MORE THAN ONE CAPACITOR IS USED CONNECT IN PARALLEL.

REF. DIAG. - 121A850		SWITCH (C) - 115D958AB	
SIGNATURES		CONNECTION LABEL - 52X332047	
MODEL	M.D.PAPE	06/29/87	
DETAIL	.	.	
CHECKED	.	.	
ENGRG	.	.	
MFG	.	.	
FOR ADDITIONAL INFO REFER TO:			
APPLIED PRACTICES	QUALITY	.	.
DIMENSIONS ARE IN INCHES	ISSUED	M.D.P.	06/29/87
MATERIAL	SOLID MODEL: 52A105377AA		
TITLE		REGAL-BELOTT CORPORATION	
FME: 30 FRAME SWITCH REDESIGN		52A105377AA	
SCALE: 1.000		REF. No: .	
SHEET 1 of 1		REV 1	